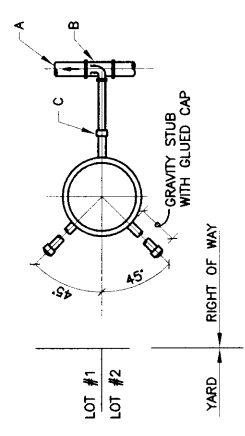
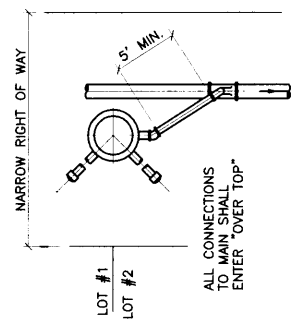


NOTE:
EACH HOUSE GRAVITY
LATERAL MUST BE
DIRECTLY CONNECTED
TO HOLDING TANK.



**PLAN SHOWING HOLDING TANK
WITH TWO HOUSE CONNECTIONS**



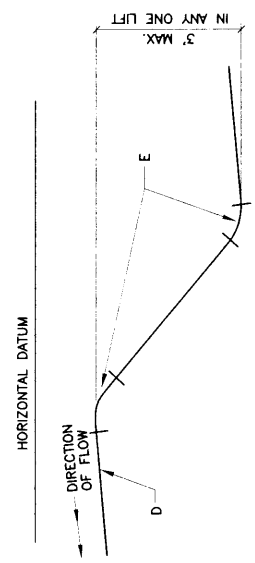
**VALVE PIT INSTALLATION
IN NARROW RIGHT OF WAY**

GENERAL NOTES:

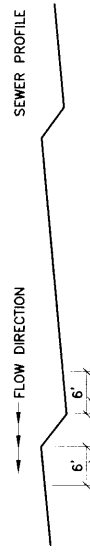
1. ONLY HOMES AND APARTMENTS WHOSE LOWER FLOOR ELEVATION ARE THE SAME SHOULD BE CONNECTED TO A COMMON VACUUM VALVE PIT INSTALLATION. WITH MULTIPLE FLOOR APARTMENTS EACH FLOOR SHOULD BE SERVICED BY ITS OWN VACUUM VALVE PIT INSTALLATION.
2. NOT LESS THAN 20' BETWEEN SUCCESSIVE LIFTS.
3. LOWER PORTION OF VALVE PIT IS A WASTE HOLDING TANK.

CONSTRUCTION NOTES:

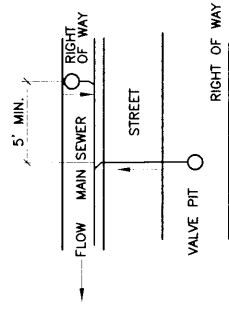
- A. 4", 6", 8" OR 10" VACUUM SEWER.
- B. 10"x10"x3" OR 8"x8"x3" OR 6"x6"x3" OR 4"x4"x3" D.W.V. WYE.
- C. 3" SCHD. 40 PVC.
- D. SLOPE: CONSULT DESIGN MANUAL.
- E. LONG TURN 45° BENDS IN TWO POSITIONS.
- F. DO NOT MAKE ANY INLET CONNECTIONS IN THIS AREA.
- G. GRADE.
- H. ELL 90° AND WYE IMPORTANT: WYE SHALL BE IN VERTICAL POSITION.
- I. DIVISION VALVE.
- J. LIFT.
- K. WYE AND ST. 45° IN VERTICAL POSITION.



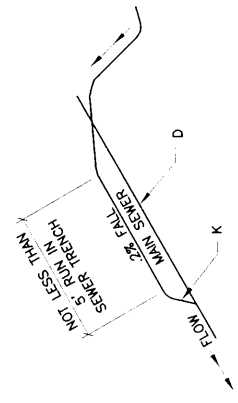
LIFT DETAILS



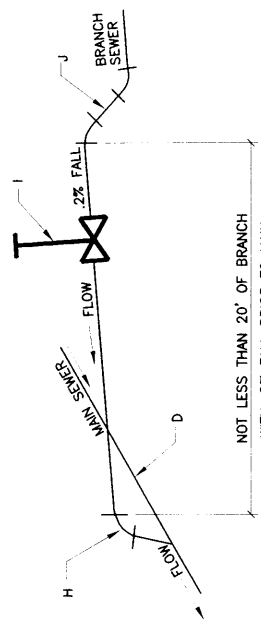
RECOMMENDED POSITIONS FOR CONNECTIONS TO MAIN



**SKETCH SHOWING MINIMUM
SPACING OF VACUUM SERVICE LATERALS**



**ALTERNATE METHOD OF CONNECTING
BRANCH OR VACUUM SERVICE LATERAL TO MAIN**



**DIAGRAMMATIC OF BRANCH
CONNECTION TO MAIN**

NOT LESS THAN 20' OF BRANCH
WITH 2% FALL PRIOR TO MAIN.

REVISIONS	NM APWA
	VACUUM SEWER STANDARDS STANDARD DETAILS
DWG. 2162	FEB. 2006