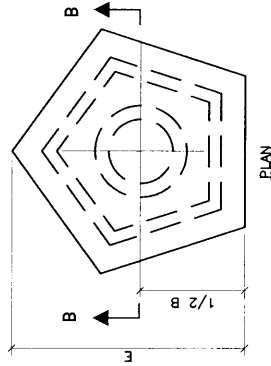


**GENERAL NOTES:**

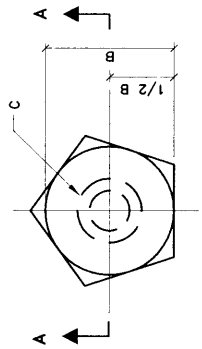
1. THESE NUTS AND SOCKETS ARE A PART OF THE VALVE STEM EXTENSION. SEE VACUUM DIVISION VALVE BOX DWG. 2170

**CONSTRUCTION NOTES:**

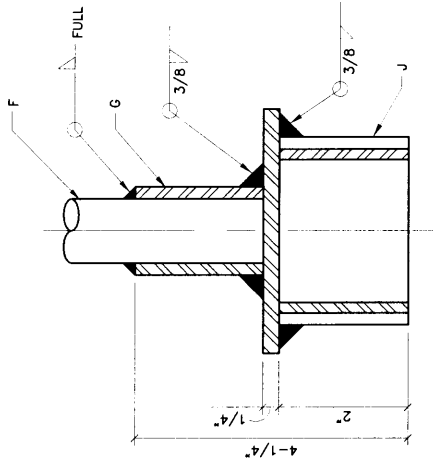
- A. 2" LONG H.R. STEEL BAR, 2" x 2"
- B. 2" DIA. STEEL CIRCLE W/ PENTAGON CIRCUMSCRIBED ABOUT CIRCLE
- C. 1" DIAMETER, SCH 40 PIPE x 2" (1.315 O.D. x 1.049 I.D.)
- D. DRILL .312 DIAMETER HOLE THROUGH PIPE FOR .31 DIAMETER CLEVIS PIN/COTTER PIN.
- E. 3-1/4"
- F. 1" DIAMETER EXTENSION BAR, 6 FEET LONG. W/ T HANDLE.
- G. 1" DIAMETER, SCH 40 x 2" (1.315 O.D. x 1.049 I.D.)
- H. PENTAGONAL SHAPED x 1/4" H.P. STEEL PLATE 1/2" LARGER THAN TUBULAR SECTION BELOW
- J. 2" LONG H.R. STEEL PENTAGONAL SHAPED TUBULAR SECTION x .1875 WALL W/ 1/8" TOTAL CLEARANCE TO EXTENSION NUT.



PLAN

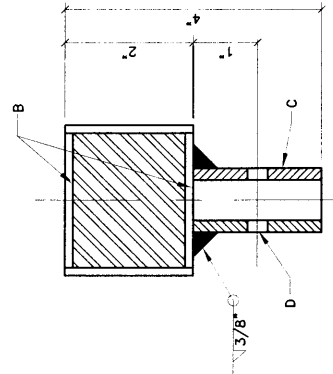


PLAN



SECTION B-B

EXTENSION SOCKET



SECTION A-A

EXTENSION NUT

REVISIONS	NM APWA
	VACUUM SEWER STANDARDS VACUUM DIVISION VALVE STEM NUT AND SOCKET DETAILS DWC. 2169 FEB. 2006