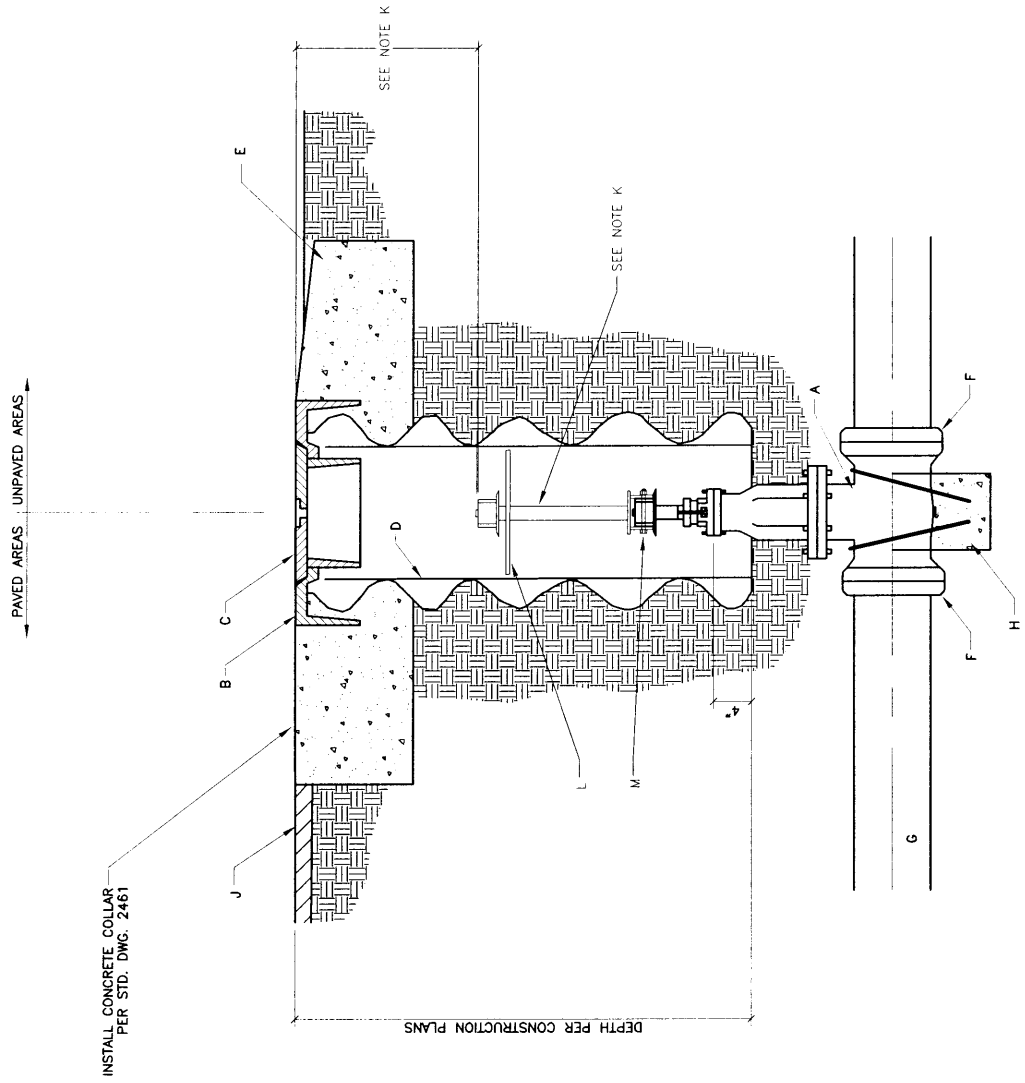


CONSTRUCTION NOTES:

- A. RESILIENT COATED WEDGE GATE VALVE AS MANUFACTURED BY WATERLOUS OR EQUAL. SUPPLY WITH 2"-5 SIDED NUT PER STD. DWG. 2169.
- B. RING
- C. COVER
- D. 10" DIA. RIBBED OR CORRUGATED PVC OR PE PIPE WITH SMOOTH INTERIOR, C-900.
- E. CONCRETE COLLAR. INSCRIBE CONCRETE SURFACE WITH SIZE OF VACUUM LINE AND DIRECTION OF FLOW (MIN. 2" LETTERING). UNPAVED AREAS, INSTALL COLLAR FLUSH WITH PAVED AREAS. PAVED AREAS, SET RING 1" ABOVE GRADE AND SLOPE TOP OF CONCRETE DOWN TO 1" BELOW GRADE.
- F. MEGALUG, OR EQUAL, RESTRAINING GLAND.
- G. VACUUM MAIN LINE.
- H. VALVE ANCHORAGE PER STD. DWG. 2333.
- J. ASPHALT PAVEMENT WHERE SPECIFIED
- K. VALVE EXTENSION SHALL BE INSTALLED ONLY WHEN INDICATED ON THE PLANS OR DIRECTED BY THE ENGINEER. WHEN INSTALLED, DEPTH TO OPERATING NUT SHALL BE MAXIMUM 24" EXTEND 12" MIN. WHEN EXTENSION IS REQUIRED.
- L. 9" DIA. X 1/4" STEEL PLATE CENTERING DISK. WELD NEAR TOP OF SHAFT WHEN EXTENSION IS REQUIRED.
- M. SECURE EXTENSION SOCKET TO VALVE NUT WITH 1/4" S.S. THRU-BOLT AND NUT



REVISIONS	NM APWA
	VACUUM SEWER STANDARDS DIVISION VALVE VALVE BOX
DWG. 2170	FEB. 2006