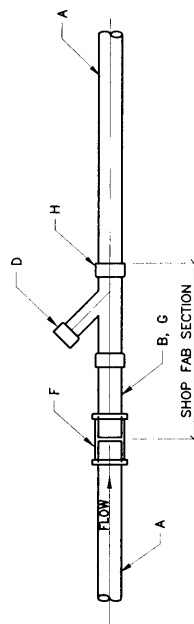
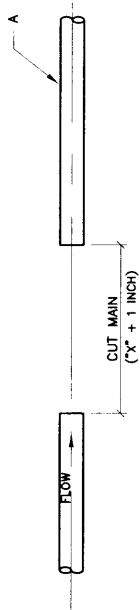
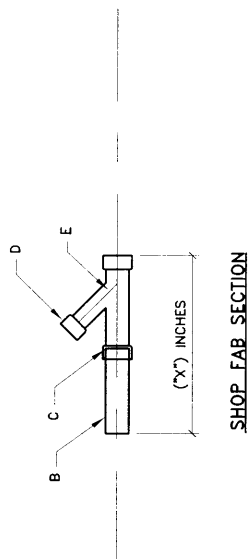


GENERAL NOTES:

1. ALL SOIL COMPACTION FOR INSTALLATION OF SERVICE WYE TO BE 95% OF MAXIMUM DRY DENSITY PER ASTM D 1557.

CONSTRUCTION NOTES:

- A. EXISTING VACUUM SEWER MAIN
- B. SCHED. 40 PVC PIPE—LENGTH TO BE GREATER THAN COMPRESSION COUPLING
- C. SOLVENT WELD AT SHOP
- D. 3" BRANCH (FOR 3" LATERAL FROM VALVE) SEE STD. DWG. 2163.
- E. SCHED. 40 PVC WYE (P x P x P) SEE STD. DWG. 2163.
- F. COMPRESSION COUPLING AS PER SPEC.
- G. SLIDE COMPRESSION COUPLING ONTO THIS PIECE OF PIPE BEFORE INSERTING IN TRENCH
- H. SOLVENT WELD IN FIELD



COMPLETED INSTALLATION IN FIELD

REVISIONS

NM APWA

VACUUM SEWER STANDARDS
SERVICE WYE INSTALLATION
ON EXISTING VACUUM MAIN
DWG. 2174 FEB. 2006