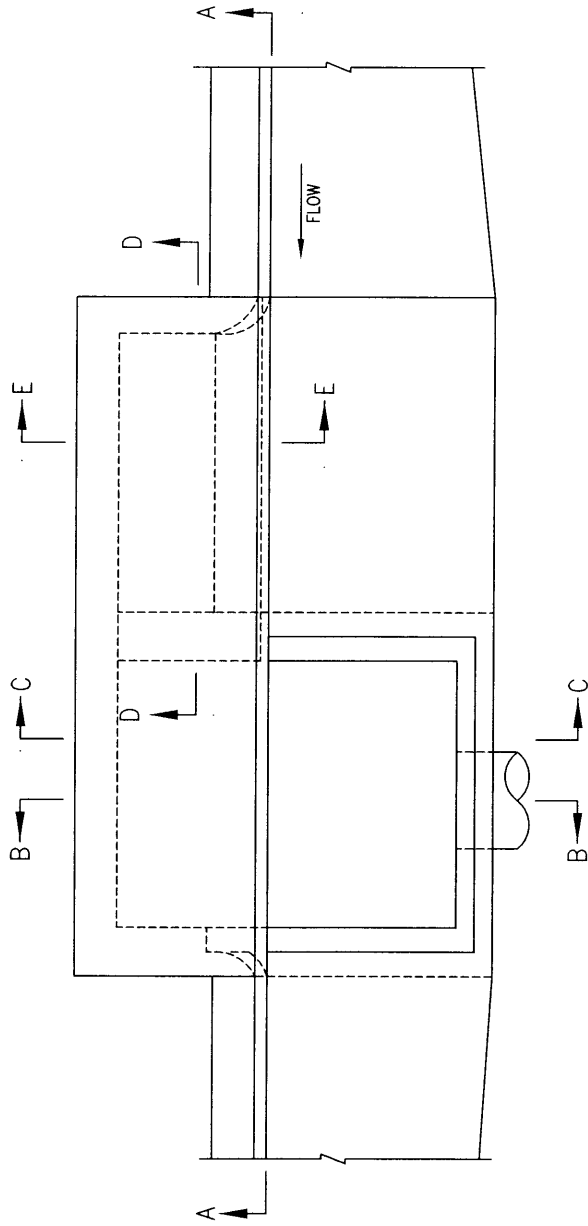


GENERAL NOTES:

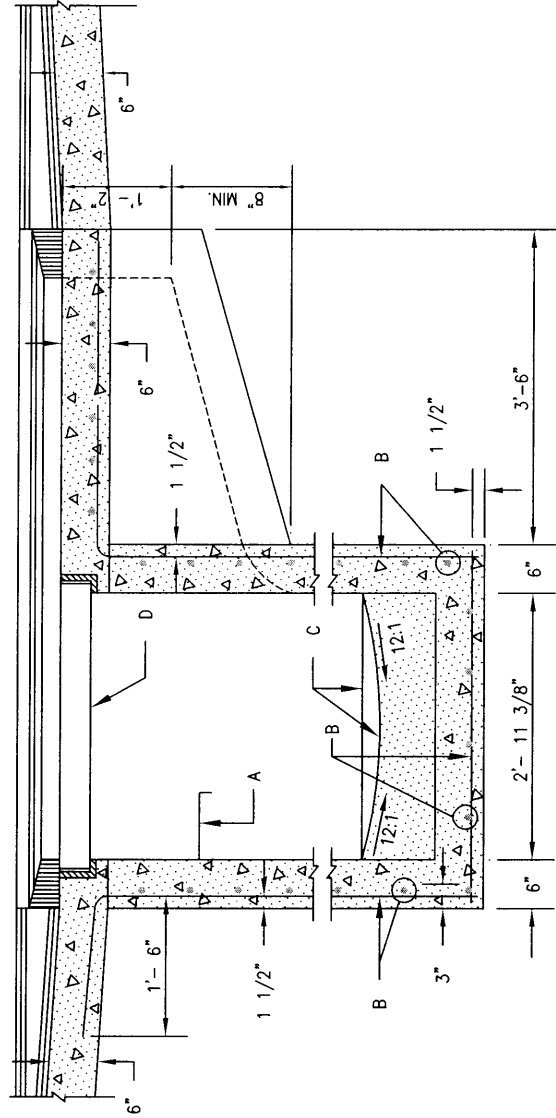
1. SEE DWG. 2202 FOR TYPE "A" INLET SECTIONS.
2. FOR STORM INLET GUTTER TRANSITION, SEE DWG. 2207.
3. OUTLET PIPE SIZE, PER DESIGN REQUIREMENT.
4. FOR FRAME & GRATING, SEE DWG. 2216, 2220 & 2221.

CONSTRUCTION NOTES:

- A. FOR STORM INLET DEPTHS GREATER THAN 4', INSTALL STD. STEPS. SEE DWG. 2229. STEPS ARE TO BE INSTALLED ON DOWNSTREAM FACE OF INLET.
- B. NO. 4 BARS AT 6" O.C. EACH WAY.
- C. CONCRETE FILL, MINIMUM SLOPE SHOWN IN SECTION A-A.
- D. GRATE



PLAN



SECTION A-A

REVISIONS
12-21-92

NM APWA

DRAINAGE
STORM INLET TYPE "A"
PLAN AND SECTION A-A

DWG. 2201

FEB. 2006