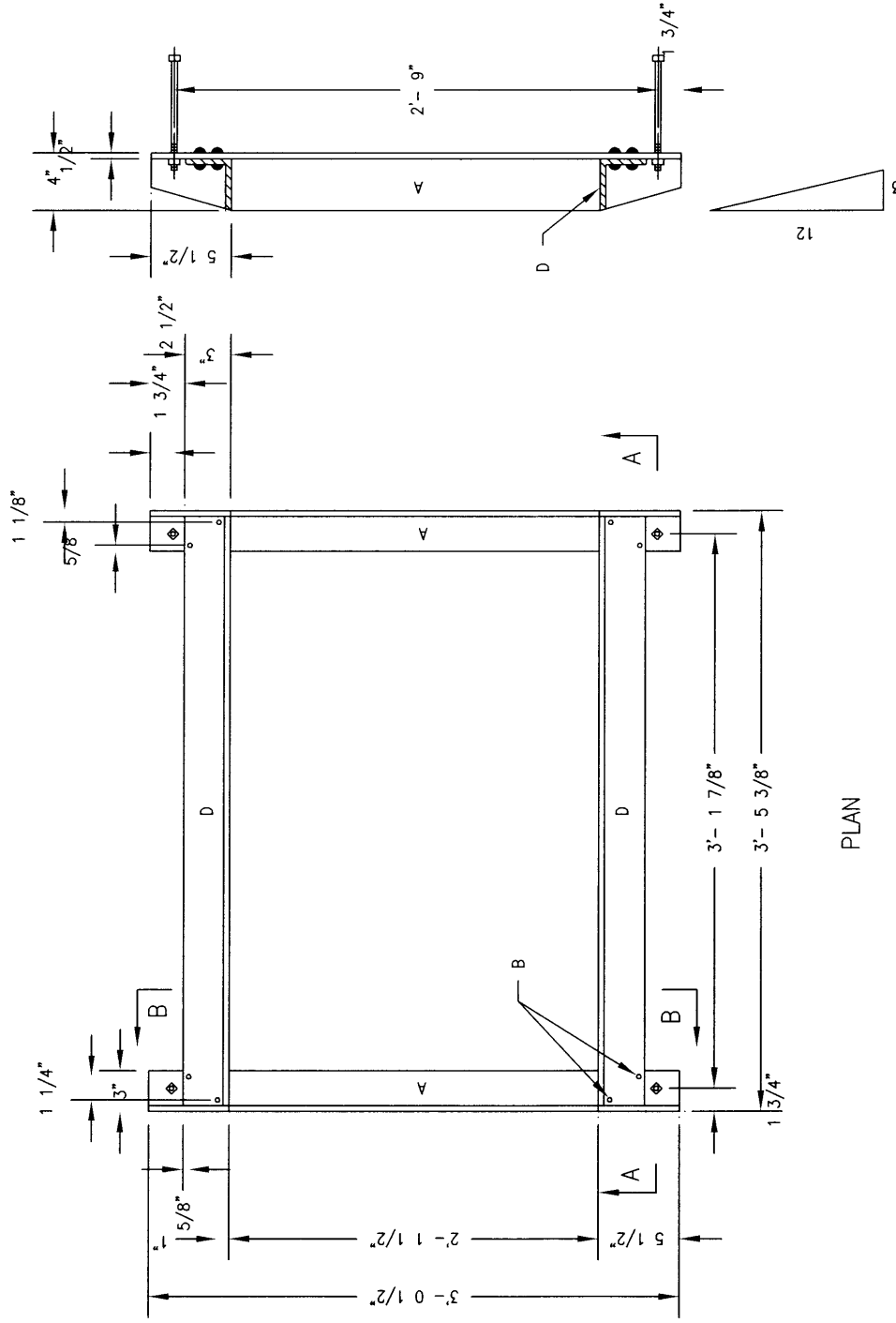


GENERAL NOTES:

1. ALL EXPOSED METAL PARTS SHALL BE PAINTED PRIOR TO ASSEMBLY. WELDING, MACHINING AND DRILLING SHALL BE DONE PRIOR TO PAINTING. ALL DIMENSIONS ARE FINISH DIMENSIONS.
2. ALL PARTS SHALL BE OF STRUCTURAL STEEL, GRADE 36.
3. FOR CLEANING AND PAINTING OF FRAME SEE DWG. 2215, GENERAL NOTE NO. 4.
4. FRAME MAY BE WELDED OR RIVETED.

CONSTRUCTION NOTES:

- A. 4" X 3" X 1/2" X 3" 1/2" L.
- B. 2 - 3/8" RIVETS AT EACH CORNER, SEE GENERAL NOTE NO. 5.
- C. 4 - 1/2" X 8" BOLTS WITH SQUARE HEAD & NUT AT EACH CORNER. FOR ANCHORING FRAME INTO CONCRETE WALL.
- D. 3 - 1/2" X 3" X 3/8" X 3'-4 3/8" L.



PLAN

SECTION A-A

REVISIONS

NM APWA

DRAINAGE  
STORM INLET FRAME

DWG. 2216