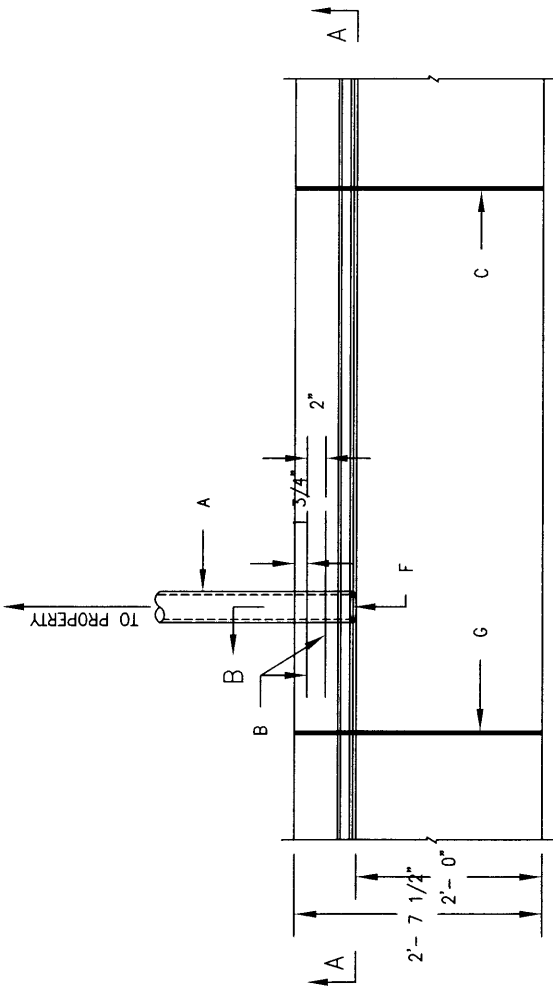


GENERAL NOTES:

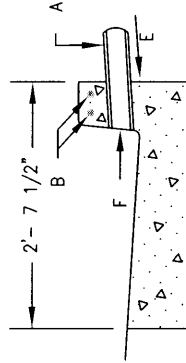
1. WHEN PLACING DRAIN THROUGH EXISTING CURB, REMOVE AND REPLACE ENTIRE STONE OF CURB AND GUTTER.
2. THE CITY DOES NOT ACCEPT RESPONSIBILITY FOR MAINTENANCE FOR ANY DRAIN LINES INSTALLED BY OR FOR PRIVATE PROPERTY OWNERS.

CONSTRUCTION NOTES:

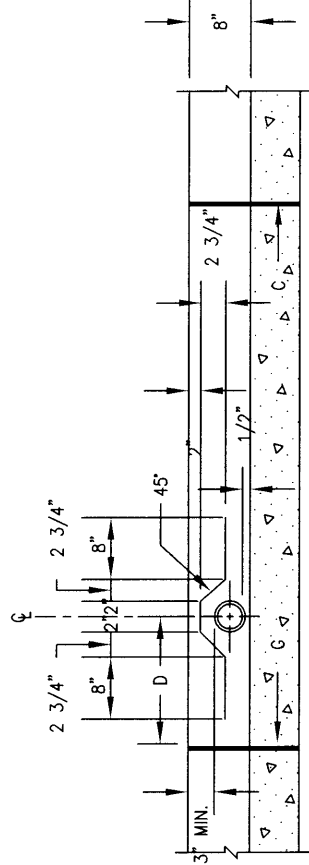
- A. DRAIN, D.I. OR SCH. 40 P.V.C. PIPE, 4" NOM. SIZE (MAX.) TO PROPERTY.
- B. 2 - NO. 3 BARS, 2'-4" LONG, PLACED AS SHOWN.
- C. COLD JOINT.
- D. DISTANCE FROM ϕ OF DRAIN TO NEAREST JOINT, VARIABLE WITH 16" MIN.
- E. SLOPE 1/4" PER FT. WITHIN R.O.W.
- F. DRAIN PIPE NOT TO PROTRUDE BEYOND CURB FACE.
- G. JOINT NEAREST TO DRAIN TO BE AN EXPANSION JOINT.



PLAN



SECTION B-B



SECTION A-A

	NM APWA
REVISIONS	DRAINAGE DRAIN LINE THROUGH CURB
DWG. 2235	
FEB. 2006	