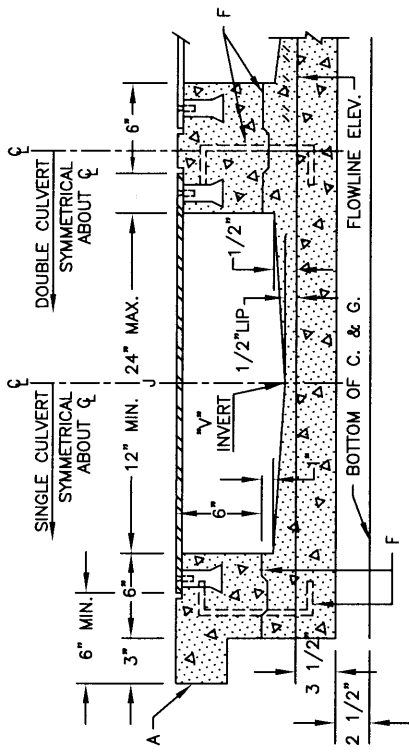


SIDEWALK CULVERT NOTES:

1. PLACING OF DRAIN THRU EXIST. SIDEWALK AND CURB & GUTTER REQUIRES THAT ENTIRE SIDEWALK AND C & G STONES BE REMOVED AND REPLACED AS DETAILED HEREIN.
2. BOTTOM SLAB OF CULVERT SHALL BE POURED MONOLITHICALLY WITH NEW GUTTER.
3. THE INVERT SHALL BE TROWELED TO PRODUCE A HARD POLISHED SURFACE OF MAX. DENSITY AND SMOOTHNESS. INVERT SHALL BE V-SHAPED TO WITHIN 3" OF OUTLET, THEN WARPED TO PARALLEL FLOWLINE AT OUTLET, UNLESS OTHERWISE SHOWN.
4. ALL EXPOSED CONC. SURFACE SHALL MATCH GRADE, COLOR, FINISH AND SCORING OF ADJACENT CURB AND SIDEWALK.
5. SIDEWALK REPLACED DURING CONSTRUCTION SHALL BE POURED MONOLITHICALLY WITH CULVERT WALLS.
6. IF ROD ANCHORS ARE USED, DRILL & TAP FOR F.H. MACHINE SCREW. ATTACH ANCHORS TO PLATE AND SECURE PLATE IN PLACE PRIOR TO POURING OF WALLS.
7. LENGTH OF EACH PLATE SHALL BE SUCH THAT THE WEIGHT WILL NOT EXCEED 300 LBS. AND SHALL BE STRESS RELIEVED AFTER FABRICATION. CLEAN SURFACE OF PLATE AND FRAMING MEMBERS AND PAINT W/ ONE SHOP COAT RED OXIDE AND TWO FINISH COATS ALUMINUM PAINT (ASHTO M 69).

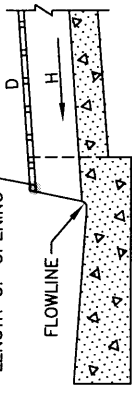
SIDEWALK CULVERT CONSTRUCTION NOTES:

- A. MATCH NEAREST CONTROL JOINT, INSTALL 1/2" EXPANSION JOINT.
- B. EDGE OF SIDEWALK OR SETBACK (VARIABLE).
- C. 3" RADIUS (TYPICAL).
- D. 3/8" CHECKERED STEEL PLATE (PAINT PER NOTE 7, ABOVE).
- E. FOR SECURING PLATE USE 1" X 5" S.S. ROD ANCHOR, "RED HEAD MULTI-SET II SRM-38 ANCHOR" OR APPROVED EQUAL. INSTALL PER MANUFACTURER'S INSTRUCTIONS AT MAX. 24" O.C. A MINIMUM OF 2 PER SIDE AND ONE WITHIN 6" OF EACH END.
- F. CONSTRUCTION JOINT IS OPTIONAL. IF USED, SPACE DOWELS AT 18" O.C. MAX., 1 1/2" MINIMUM FROM FACE OF CONCRETE.
- G. 3/8" - 16 X 1 1/4" COUNTERSUNK, F.H., STAINLESS STEEL, MACHINE SCREW.
- H. SLOPE 1/4" PER FT. MIN.
- J. DRAIN WIDTH PER PLAN (12" MIN., 24" MAX.).

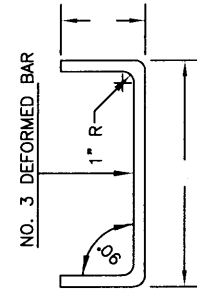


SECTION A-A

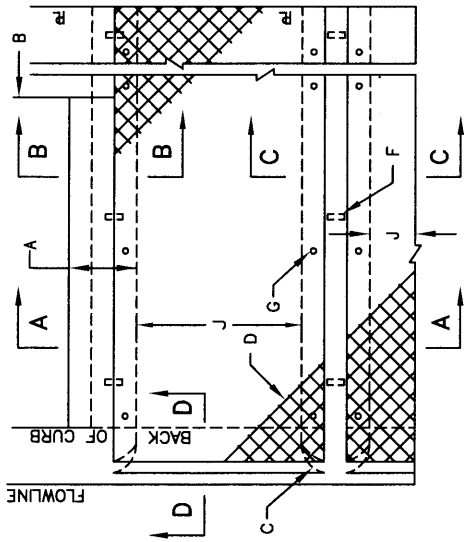
WELD 3/4" STEEL ROD TO PLATE FULL LENGTH OF OPENING



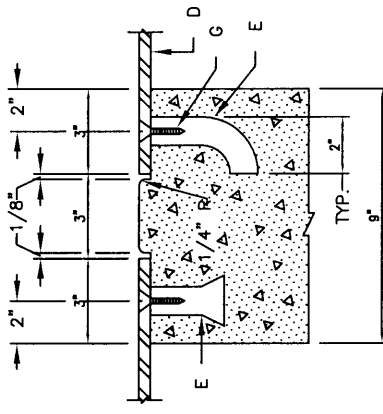
SECTION D-D



DOWEL DETAIL



**PLAN
SINGLE AND OR MULTIPLE CULVERT**

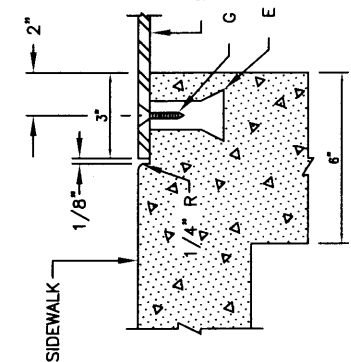


SECTION C-C

DRAINAGE

SIDEWALK CULVERT WITH STEEL PLATE TOP

SCALE: NONE



SECTION B-B

REVISIONS	NM APWA
	DRAINAGE SIDEWALK CULVERT WITH STEEL PLATE TOP
	DWG. 2236