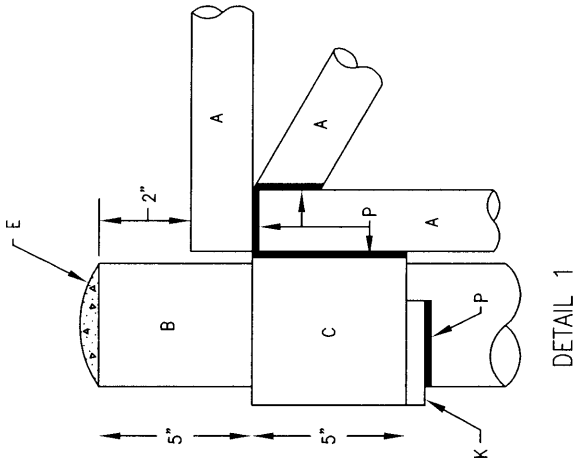


GENERAL NOTES:

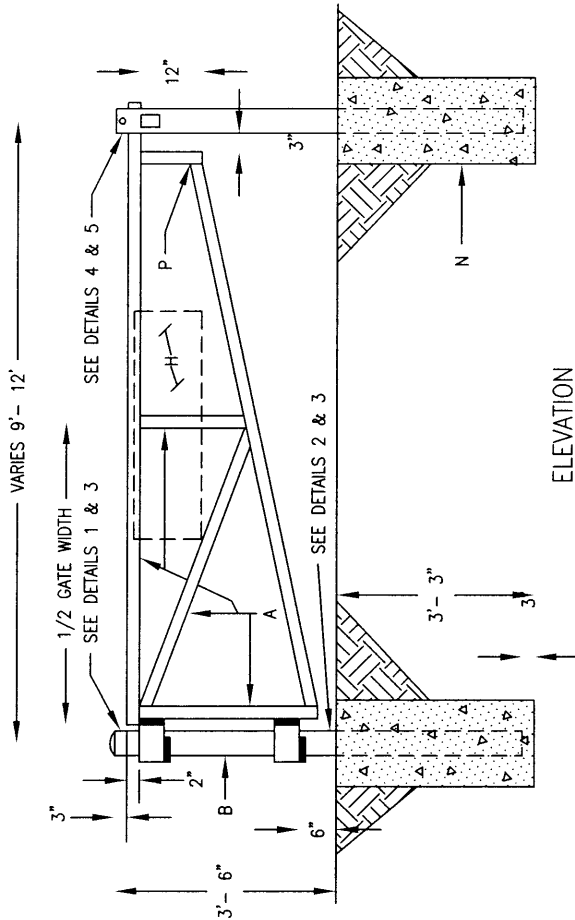
1. ALL WELDED AND CUT AREAS TO BE CLEANED THOROUGHLY WITH A WIRE BRUSH AND OR SAND BLAST AND REGALVANIZED.
2. REGALVANIZING SHALL BE WITH SHERWIN WILLIAMS ZINC CLAD 7 PRIMER OR EQUAL.

CONSTRUCTION NOTES:

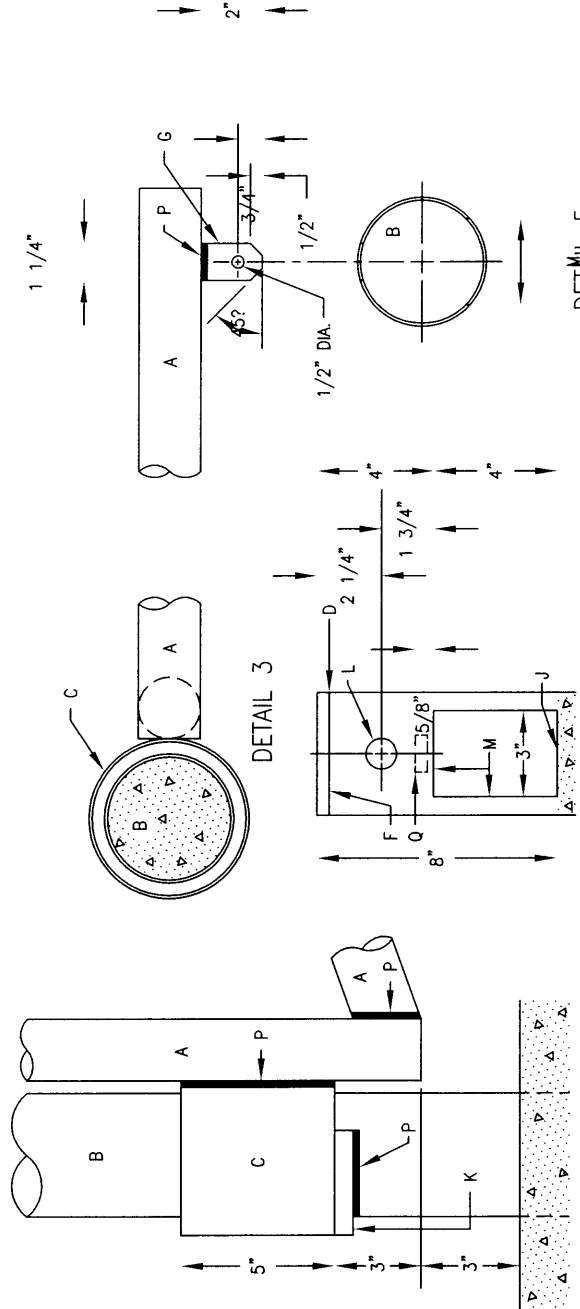
- A. 2" NOMINAL DIA. GALV. PIPE, MIN. WEIGHT PER FOOT 3.65 LBS.
- B. 4" DIA. BLACK STEEL PIPE, MIN. 10.79 LBS./FT., CONC. FILLED, PAINT W/2 COATS ALUM. PAINT.
- C. 5" DIA. BLACK STEEL PIPE, MIN. 14.62 LBS./FT., PAINT W/2 COATS ALUM. PAINT.
- D. 1/4" BUTT WELD ALL AROUND.
- E. CONCRETE ROUNDED AT TOP OF POST.
- F. 3/8" X 4 1/4" DIA. STEEL PLATE.
- G. 3/8" STEEL PIPE FLANGE.
- H. REFLECTIVE SIGN STATING, AUTHORIZED VEHICLES ONLY, WILL BE PROVIDED AND INSTALLED BY OWNER.
- J. STOP CONC. IN PIPE AT THIS POINT.
- K. 1/2" SQ. STEEL BAR FOR HINGE SUPPORT. POSITION BAR TO ALLOW UNRESTRICTED GATE ROTATION THROUGH ENTIRE SWING OF GATE OPENING.
- L. 1" DIA. FINGER HOLE.
- M. MAKE A 3" X 4" CUT IN PIPE.
- N. 3,000 PSI AIR ENTRAINED FLY ASH CONC.
- P. WELD ALL 2" PIPE & FIXTURE CONNECTIONS WITH 3/8" FILLET ALL AROUND.
- Q. 1 1/2" X 5/8" SLOT FOR STEEL PIPE FLANGE.



DETAIL 1



ELEVATION



DETAIL 5

DETAIL 2

DETAIL 4

DETAIL 3

REVISIONS

NM APWA

DRAINAGE

PIPE GATE DETAIL

DWG. 2251

FEB. 2006