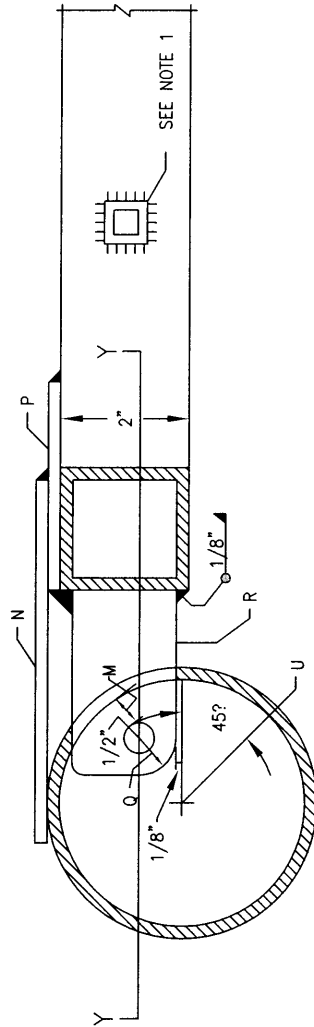
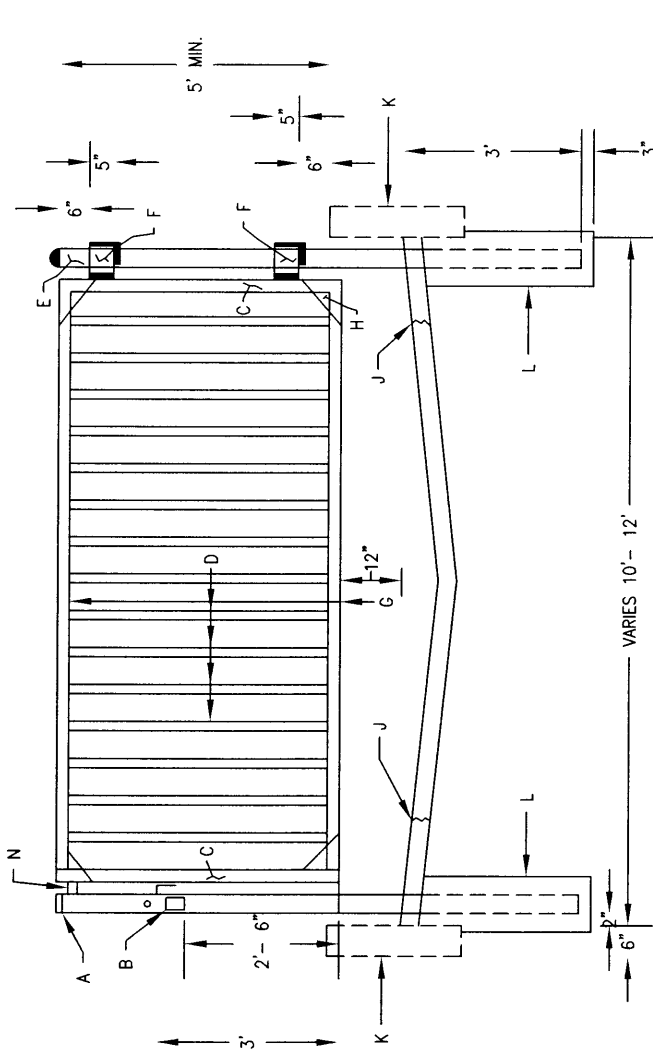


GENERAL NOTES:

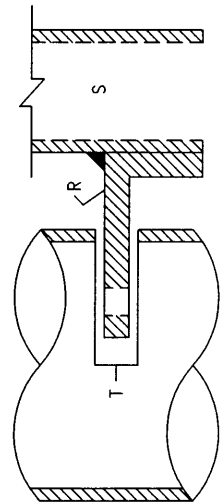
1. WELDS TO BE CONTINUOUS ALL AROUND, 3/32" FILLET, TYPICAL FOR GATE TUBES AND GUSSETS.
2. REMOVE SLAG AND BURRS AFTER FABRICATION.
3. OWNER TO FURNISH LOCK.
4. FINISH: AS SPECIFIED BY THE PLANS. IF NO FINISH SPEC'D. THEN PAINT WITH ONE SHOP COAT OF ZINC RICH PRIMER AND TWO COATS OF ALUMINUM PAINT. (AASHTO M-69)

CONSTRUCTION NOTES:

- A. 4" STEEL POST W/WELDED CAP ON TOP, FILL W/CONC. TO BOTTOM OF LOCK POCKET.
- B. LOCK POCKET & GATE LATCH PER. DETAIL THIS DWG.
- C. 2" X 2" STEEL TUBING X 1/8" WALL THICKNESS, VERTICAL FRAME, W/1/8" PLATE. CAP WELDED TO TOP.
- D. 3/4" X 3/4" STEEL TUBING X 1/16" WALL THICKNESS @ 6" O.C. MAX.
- E. 4" SCHEDULE 40 STEEL POST CONC. FILLED.
- F. SLEEVE HINGES PER. STD. DETAIL DWG. 2251.
- G. 2" X 2" STEEL TUBING X 1/8" WALL THICKNESS FOR HORIZ.
- H. 6" X 6" X 1/8" GUSSET PLATE. ▲, 4 PLACES.
- J. SAWCUT 1" MIN.
- K. CONCRETE CHANNEL PER. STD. DETAIL DWG.
- L. 16" DIA. CONCRETE FINISH TOP TO MATCH CHANNEL SURFACE.
- M. DRILL HOLE IN FIELD TO PROVIDE 1/8" MAX. "SLOP
- N. 1/8" STEEL STOP PLATE.
- P. 1/8" STEEL GUSSET PLATE.
- Q. 3/4" RADIUS.
- R. 3" X 3" X 3/8" ANGLE - 1 5/8" LONG.
- S. 2" TUBING.
- T. 5/8" SLOT, ± 75% OF POST CIRCUMFERENCE.
- U. Ø OF 1"Ø FINGER HOLE, 1" ABOVE LOCK SLOT & Q OF 3" WIDE X 4" HIGH ACCESS HOLE & LOCK POCKET TOP OF HOLE 1" BELOW LOCK SLOT, T.



PLAN SECTION



PLAN SECTION Y-Y

REVISIONS

NM APWA

DRAINAGE

SQUARE TUBE GATE DETAIL

DWG. 2253

FEB. 2006