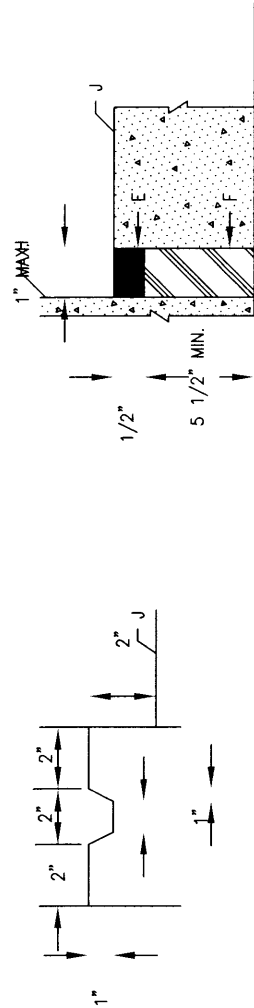
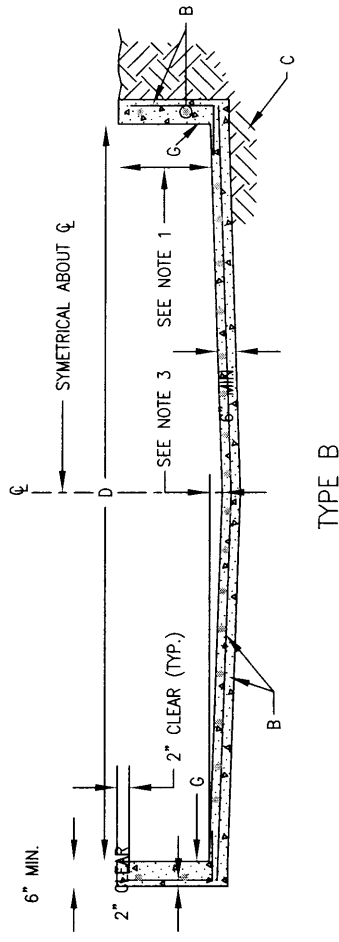
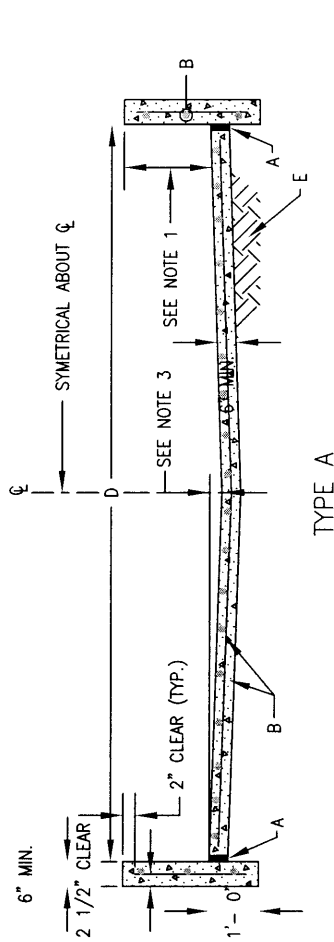


GENERAL NOTES:

1. CHANNEL DEPTHS EXCEEDING 2'-0" WILL REQUIRE SEPARATE DESIGN FOR FLOOR AND WALLS.
2. TYPE B LINING WILL BE USED ONLY WHERE NO UTILITIES ARE LOCATED OR PROPOSED.
3. UP TO 16'-0" WIDTH USE 4" INVERTED CROWN. 16'-0" WIDTH AND OVER USE 6" INVERTED CROWN.
4. **WARNING:** THESE WALLS ARE NOT DESIGNED TO SUPPORT THE ADDITION OF GARDEN OR RETAINING TYPE OF WALLS. A SEPARATE DESIGN MUST BE SUBMITTED FOR THE ENGINEER'S APPROVAL IN SUCH INSTALLATIONS.
5. THE OUTSIDE OF DRAINAGE WALLS SHALL NOT EXTEND BEYOND EASEMENT LINES OR RIGHT-OF-WAY LINES.
6. UNLESS OTHERWISE DETAILED ON PLANS, ISOLATE UPSTREAM AND DOWNSTREAM ENDS OF LINING FROM OTHER STRUCTURES AND FACILITIES USING THE EXPANSION JOINT DETAIL, THIS SHEET.
7. 6" CONC. BLOCK WITH CORES FILLED WITH CONC. AND NO. 4 REBARS INSERTED INTO CORES AT 1'-6" O.C. MAY BE SUBSTITUTED FOR FORMED CONC. WALLS.

CONSTRUCTION NOTES:

- A. EXPANSION JOINT, SEE DETAIL BELOW.
- B. NO. 4 REBARS AT 6" O.C. LONG. AND 12" O.C. TRANSVERSE.
- C. 6" COMPACTED SOIL 95% PER ASTM D 1557.
- D. WIDTH OF CHANNEL.
- E. URETHANE PRIMER AND SEALANT.
- F. POLYETHYLENE FOAM FILLER TO DEPTH OF SLAB.
- G. KEYED CONSTRUCTION JOINT, SEE DETAIL BELOW.
- H. WALL SURFACE.
- J. CHANNEL SURFACE.



KEYWAY  
DETAIL

EXPANSION JOINT DETAIL

REVISIONS

NM APWA

DRAINAGE  
TYPICAL LINING FOR  
DRAINAGE EASEMENTS

DWG. 2260

FEB. 2006