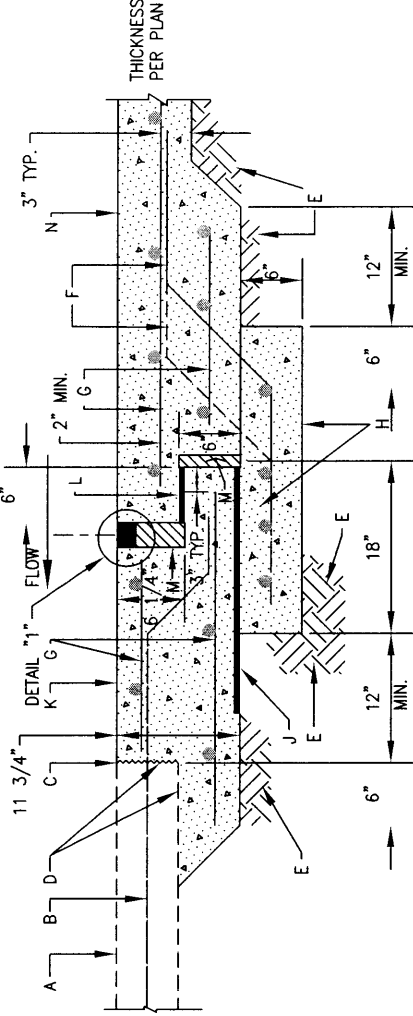
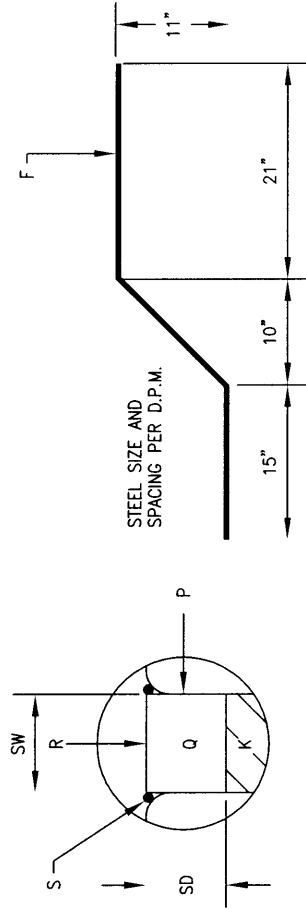


**GENERAL NOTES:**

1. EXPANSION JOINT WITH SLEEPER SHALL BE USED IN NEW AND REHABILITATION CONSTRUCTION, AS SPECIFIED BY THE ENGINEER. JOINT MATERIALS SHALL BE INSTALLED ACCORDING TO MANUFACTURER'S RECOMMENDATIONS.
2. FOR PARTIAL JOINT CONSTRUCTION, A 15 LB. FELT BOND BREAKER, THE WIDTH OF THE STEP JOINT SHALL BE APPLIED BETWEEN EXISTING AND REPLACEMENT JOINT MATERIALS.
3. REHABILITATION MAY BE REQUIRED AT EITHER OR BOTH SIDES OF STEP JOINT.
4. FOR NEW CONSTRUCTION DISREGARD REHABILITATION NOTES; A COLD JOINT IS ALLOWED A MINIMUM OF 5' ON EITHER SIDE OF JOINT CENTERLINE WITH REBAR CONTINUOUS THROUGH COLD JOINT. SANDBLAST COLD JOINTS BEFORE PLACING NEW CONCRETE.
5. AS SOON AS THE STEP JOINT IS COMPLETE, THE EXPOSED ENDS OF THE STEP JOINT AT CHANNEL EDGE SHALL BE COVERED WITH A PROTECTIVE SHEET OF 16 GA. GALV. STEEL WITH 1/2" CRIMPED EDGES ANCHOR AT TWO CORNERS ON ONE SIDE OF THE JOINT, FLUSH TO THE TOP OF THE JOINT, AND EXTEND AT LEAST 3" PAST THE SEALANT, FILLERS AND LOWER BEARING PLATE.



CROSS SECTION DETAIL OF REPLACEMENT OR NEW EXPANSION JOINT WITH CONCRETE SLEEPER



"Z" BAR DETAIL

FILLER AND SEALANT DIMENSION TABLE (INCHES)

FILLER SIZE (M)	SEALANT BLOCK-OUT		SEALANT ORDER SIZE	
	TOP (MT)	DEPTH	WIDTH	DEPTH
1"	2"	2"	2 1/2"	2"
2"	3"	2 1/2"	3 3/4"	2 1/2"
3"	4"	3 1/2"	5"	3 1/2"
4"	5"	4"	6 1/4"	4"

- H. FORM AND POUR CONCRETE SLEEPER, STEEL TROWEL BEARING SURFACE SIDE ONLY. RECOMPACT ADJACENT SOIL.
- J. LOW DENSITY POLYETHYLENE BEARING PLATE, 1/4" X 24", PLACED FLAT ON SAME GRADE AS CHANNEL. CARE SHALL BE TAKEN NOT TO LOCK EDGE OF PLATE WITH CONCRETE FILLED HOLES OR FLASHING. COMPACT SOIL TO TOP PLANE OF PLATE.
- K. FORM AND POUR DOWN STREAM CONCRETE SECTION AS SHOWN WITH ALUMINUM FLOAT AND DRY BROOM FINISH. APPLY STEEL TROWEL FINISH TO BEARING PLATE SURFACE ONLY. BEARING PLATE SURFACE MUST BE PARALLEL TO BEARING PLATE SURFACE ON SLEEPER. FORMS MUST REMAIN IN PLACE AT LEAST 12 HOURS FOLLOWING POUR.
- L. PLACE 1/4" X 6" LOW DENSITY POLYETHYLENE BEARING PLATE AS SHOWN BETWEEN THE TWO FILLER SECTIONS.
- M. PLACE POLYETHYLENE FOAM FILLERS AS SHOWN, PLASTAZONE OR APPROVED EQUAL. DO NOT ANCHOR WITH NAILS OR BONDING AGENT. KEEP IN PLACE WITH FRESH CONCRETE WHEN POURING UPSTREAM SECTION. DO NOT ALLOW FRESH CONC. BETWEEN FILLERS AND PREVIOUS CONCRETE. SEE TABLE FOR BOTTOM AND TOP FILLER SIZES.
- N. POUR UPSTREAM SECTION WITH FLY ASH CONCRETE. SEE DWG. 2261 FOR CHANNEL LINING THICKNESS. VERTICAL SIDES OF FORM USED TO BLOCK OUT SPACE FOR SEALANT SHALL BE SMOOTH, CLEAN MATERIAL TO AVOID CAUSING CONTAMINATION AND FOR EASE OF REMOVAL. CONCRETE SHALL BE CURED TO MINIMUM 80% OF DESIGN STRENGTH BEFORE INSTALLING SEALANT.
- P. PREPARE VERTICAL NOSING FOR BONDER BY SANDBLASTING. BLOW ALL SAND OUT OF THE JOINT BEFORE APPLYING BONDER.
- Q. IMMEDIATELY INSTALL ETHYLENE VINYL ACETATE FOAM SEALANT, EVA-SEAL OR APPROVED EQUAL, AS SHOWN. DIMENSION OF FOAM SEALANT BEFORE INSTALLATION SHALL BE PER DIMENSION TABLE. FOAM SEALANT MUST BE COMPRESSED INTO JOINT. IMMEDIATELY REMOVE ALL BONDER FROM TOP SURFACE OF SEALANT.
- R. SAND SURFACE OF SEALANT FLUSH TO TOP OF CONC. APPLY ULTRA VIOLET PROOFING, 2 COATS, FLEXCOAT 19 OR APPROVED EQUAL.
- S. BONDER BEAD IN GROOVE BETWEEN TOOLED RADIUS AND SEALANT IS TO REMAIN.

REVISIONS

NM APWA

CHANNEL EXPANSION JOINT WITH SLEEPER

DWG. 2265

FEB. 2006