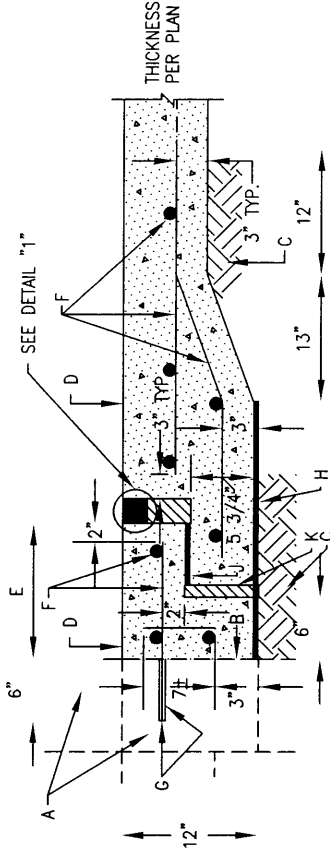


GENERAL NOTES:

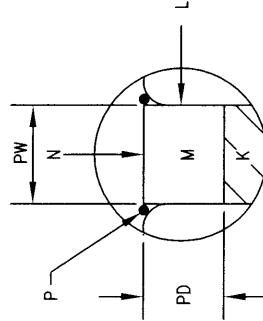
1. THIS JOINT SHALL BE SPECIFIED FOR CONNECTING NEW OR REHABILITATED CHANNEL LINING TO EXISTING CONCRETE STRUCTURES AS SPECIFIED BY THE ENGINEER. A SIMILAR JOINT MAY BE DETAILED FOR JOINTS AT NEW STRUCTURES. JOINT MATERIAL SHALL BE INSTALLED ACCORDING TO THE MANUFACTURER'S RECOMMENDATIONS. BREAK OUT AND REMOVE EXISTING LINING AS REQUIRED BY THE ENGINEER.
2. FOR NEW LINING CONNECTION TO EXISTING STRUCTURE, DISREGARD REHABILITATION NOTES.

CONSTRUCTION NOTES:

- A. EXISTING CONCRETE CHANNEL LINING OR STRUCTURE.
- B. SANDBLAST EDGE OF EXISTING CONCRETE JUST PRIOR TO PLACING NEW CONCRETE.
- C. COMPACT SUBGRADE TO MINIMUM 90% PER ASTM D 1557
- D. NEW CONCRETE CHANNEL LINING, POUR LOWER STEP SECTION FIRST, STEEL TROWEL FINISH ON STEP PARALLEL TO BOTTOM PLATE. DRY BROOM FINISH ON EXPOSED SURFACE.
- E. 12" + BOTTOM JOINT WIDTH K. TOTAL ANCHORED BAR LENGTH = E + 3".
- F. STEEL SIZE AND SPACING PER D.P.M., LONGITUDINAL STEEL AREA _____ 0025 TIMES CONCRETE AREA. TRANSVERSE STEEL AREA _____ 0025 TIMES CONCRETE AREA.
- G. CORE DRILL 1 1/2" HOLES AT 12' O.C. 6" DEEP INTO EXISTING STRUCTURE WITH CONTINUOUS WATER LUBRICATION AND COOLANT. NOTE: DO NOT USE IMPACT DRILL. BOND REBAR INTO PLACE WITH SOLID 2 PART, QUICK SETTING EPOXY.
- H. INSTALL LOW DENSITY POLYETHYLENE BEARING PLATE 1/4" X 24" COMPACT ADJACENT EARTH TO TOP PLANE OF PLATE TO PREVENT LOCKING WITH CONCRETE FILLED DEPRESSIONS.
- J. PLACE 1/4" X 6" LOW DENSITY POLYETHYLENE BEARING PLATE AS SHOWN BETWEEN THE TWO FILLER SECTIONS.
- K. PLACE POLYETHYLENE FOAM FILLERS AS SHOWN, PLASTAZONE OR APPROVED EQUAL. DO NOT ANCHOR WITH NAILS OR BONDING AGENT. KEEP IN PLACE WITH FRESH CONCRETE WHEN PLACING SECOND SECTION. DO NOT ALLOW FRESH CONCRETE BETWEEN FILLER AND PREVIOUSLY CONCRETE. SEE TABLE FOR BOTTOM AND TOP FILLER SIZES.
- L. PREPARE VERTICAL NOSING FOR BONDER BY SANDBLASTING. BLOW ALL SAND OUT OF THE JOINT BEFORE APPLYING BONDER.
- M. IMMEDIATELY INSTALL ETHYLENE VINYL ACETATE FOAM SEALANT, EVA-SEAL OR APPROVED EQUAL, AS SHOWN. DIMENSION OF FOAM SEALANT BEFORE INSTALLATION SHALL BE PER DIMENSION TABLE. FOAM SEALANT MUST BE COMPRESSED INTO JOINT. IMMEDIATELY REMOVE ALL BONDER FROM TOP SURFACE OF SEALANT.
- N. SAND SURFACE OF SEALANT FLUSH TO TOP OF CONCRETE. APPLY ULTRA VIOLET PROOFING, 2 COATS, FLEXCOAT 19 OR APPROVED EQUAL.
- P. BONDER BEAD IN GROOVE BETWEEN TOOLED RADIUS AND SEALANT IS TO REMAIN.



EXPANSION JOINT TIE TO EXISTING CONCRETE WALL



DETAIL "1"

FILLER AND SEALANT DIMENSION TABLE (INCHES)

FILLER SIZE (K)	SEALANT BLOCK-OUT		SEALANT ORDER SIZE	
	TOP (KT)	DEPTH	WIDTH	DEPTH
BOTTOM (KB)	WIDTH	DEPTH	WIDTH	DEPTH
1"	2"	4 1/4"	2"	2"
2"	3"	3 3/4"	3"	2 1/2"
3"	4"	2 3/4"	4"	3 1/2"
4"	5"	2 1/4"	5"	4"
			6 1/4"	4"

NM APWA

DRAINAGE
EXPANSION JOINT CONNECTION
TO CONCRETE WALL

DWG. 2266

FEB. 2006