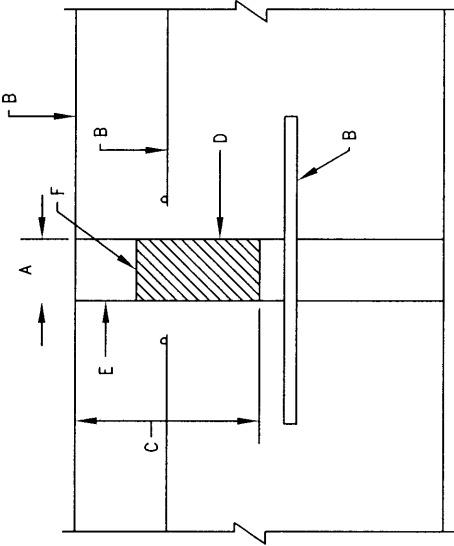


GENERAL NOTES:

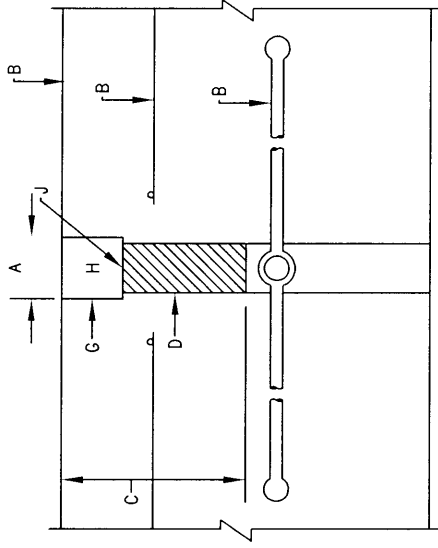
1. THESE DETAILS OF EXIST. JNT. REPAIRS ARE GUIDELINES & MIN. REQUIREMENTS FOR FAILED EXPANSION JNT. & SPALLED CHANNEL LINING REPAIRS.

CONSTRUCTION NOTES:

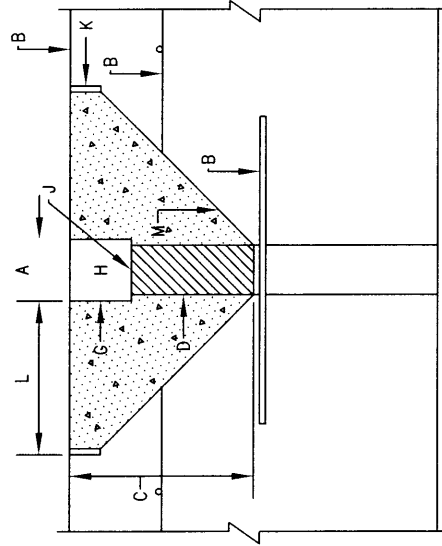
- A. JNT. WIDTH: JNTS. IN GOOD CONDITION, OF UNIFORM WIDTH, ROUT & SEAL ONLY. JNTS. IN NEED OF REPAIR SHALL BE CUT W/A WHEEL MOUNTED, DOUBLE BLADED SAW OR TRACK MOUNTED ADJ. ARBOR SAW TO OPEN JNT. TO A 1" MIN. WIDTH. SEE SECT. 602.5.1 CITY STANDARD SPECIFICATIONS.
- B. EXIST. CHANNEL LINING, REINF. STEEL, DOWELS OR WATERSTOPS TO REMAIN.
- C. JNT. TO BE ROUTED OUT TO 3" MIN. DEPTH OR TO DOWEL AND/OR WATERSTOPS, IF LESS THAN 3".
- D. POLYETHYLENE FOAM FILLER, SECT. 107.3.3.
- E. BONDING AGENT, SECT. 107.4.2.1.2.
- F. PREPARATION & APPLICATION WITH TWO COMPONENT URETHANE SEALANT. JNTS. LESS THAN 1" WIDE, SEALANT DEPTH WILL EQUAL 1/2 THE WIDTH. SEE SECTS. 107.4.1.2 & 107.4.2.
- G. SEE SECT. 107.4.1.2 FOR PREPARATION & APPLICATION & 107.4.1.1.2 FOR BONDING AGENT.
- H. FOAM SEALANT (EVA-FOAM) SECT. 107.4.1, MATERIAL SECT. 107.4.1.1.
- J. SURFACE FINISH & ULTRA-VIOLET PROOFING SECT. 107.4.1.2.3.
- K. EDGES OF SPALLED AREAS SHALL BE SAWED OR CHIPPED TO 1/2" MIN. DEPTH.
- L. WIDTH SHALL BE BROKEN OUT TO 4" MIN. WHETHER NEXT TO EXPANSION JNT. OR NOT.
- M. SPALLED AREA TO BE PATCHED SHALL BE CHIPPED & SANDBLASTED TO SOUND, CLEAN CONC. & BONDED OR PRIMED & GROUTED PER MANUFACTURER'S RECOMMENDATIONS. SECT. 106.9.



EXIST. EXPANSION JNT. REPAIR
ROUT & SEAL



EXIST. EXPANSION JNT. REPAIR
SAW-ROUT & SEAL



EXIST. EXPANSION JNT. REPAIR
SPALLED AREA
CHIP-SAW-ROUT & SEAL

REVISIONS

NM APWA

CHANNEL EXPANSION JOINT
REPAIR

DWG. 2267

FEB. 2006