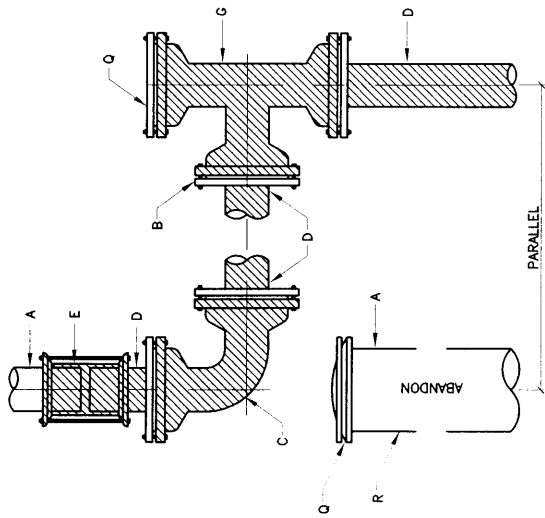


GENERAL NOTES:

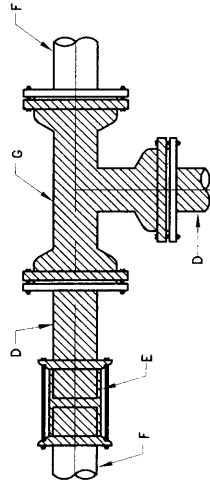
- 1 ALL NEW PIPE AND FITTINGS SHALL BE PROVIDED WITH THRUST CONTROL.
- 2 THRUST CONTROL SHALL BE BY RESTRAINED JOINTS ONLY UNLESS DIRECTED OTHERWISE BY ENGINEER.

CONSTRUCTION NOTES:

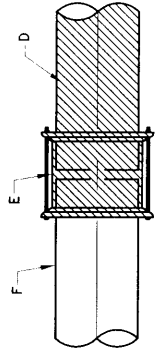
- A EXISTING STEEL PIPE.
- B REDUCE AT TEE, IF EXISTING LINE IS SMALLER THAN NEW LINE.
- C M.J., C.I. ELBOW WITH JOINT RESTRAINT.
- D NEW D.I. OR P.V.C., WITH VALVE AS DIRECTED.
- E RESTRAINED TRANSITION COUPLING FOR A.C. RESTRAINED SOLID SLEEVE FOR D.I., C.I. AND PVC.
- F EXISTING D.I., OR C.I. OR P.V.C. IF A.C., USE PAD ADAPTER.
- G M.J., C.I. TEE WITH JOINT RESTRAINT.
- H GATE VALVE FL.-M.J. WITH JOINT RESTRAINT.
- J WELDING COLLAR.
- K STEEL WELDING NECK FL.
- L TAR COAT COLLAR, NECK AND DAMAGED PIPE COATING.
- M M.J. FLANGE.
- N FLANGE.
- P PRESSURIZED CONNECTION.
- Q M.J., C.I. PLUG OR CAP WITH JOINT RESTRAINT.
- R REMOVE AT LEAST 10" OF PIPE TO BE ABANDONED AND CAP OR PLUG.
- S TAC-WELD SACRIFICIAL ANODE TO STEEL PIPE.



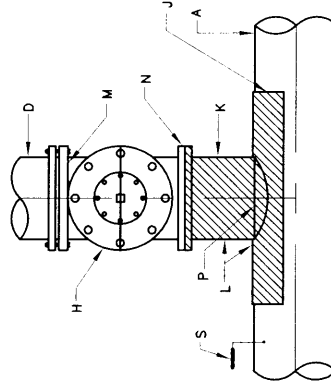
**REPLACEMENT OF STEEL LINES 4"-12"
CONNECTION DETAILS**



TEE INSERTION D.I., P.V.C. OR A.C. PIPE



**TRANSITION COUPLING
FROM D.I. OR P.V.C. TO A.C. PIPE**



CONNECTION TO EXISTING STEEL PIPE

REVISIONS	NM APWA WATER
	WATERLINE CONNECTION DETAILS
	DWG. 2301 FEB. 2006