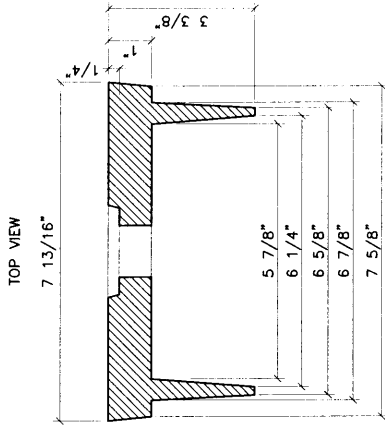
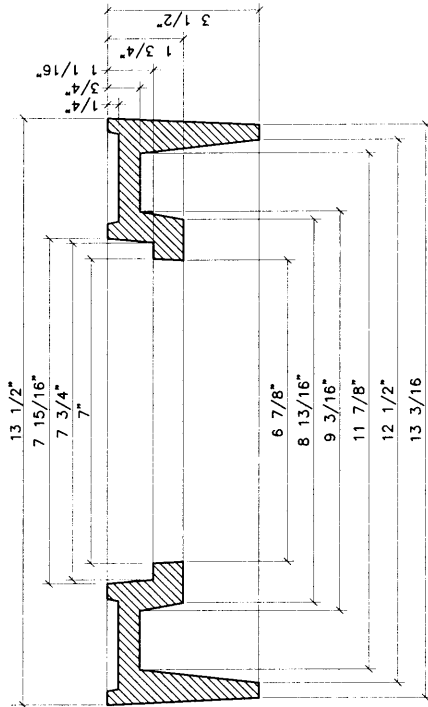
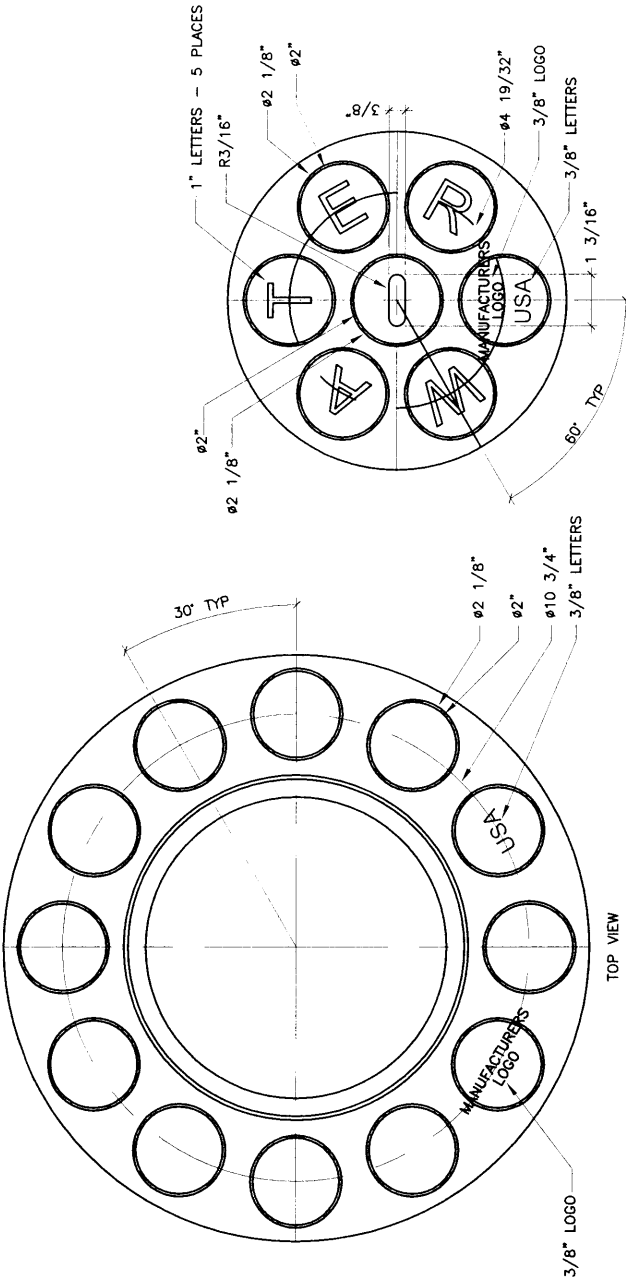


GENERAL NOTES -- RING

- 1 VALVE BOX RING DESIGNED TO ACCEPT VALVE BOX COVER.
- 2 THE CASTING NUMBER, MANUFACTURER'S LOGO, DATE OF MANUFACTURE AND "USA" SHALL BE CAST IN A CONSPICUOUS LOCATION ON BOTH THE RING AND THE COVER.
- 3 FILLETS SHALL BE 1/4"R UNLESS OTHERWISE SPECIFIED.
- 4 A DRAFT ANGLE OF 3°-5° SHALL BE APPLIED UNLESS OTHERWISE SPECIFIED.
- 5 FINISH: REMOVE EXCESS IRON AND FINIS.
- 6 THIS DETAIL DOES NOT APPLY FOR VALVE BOX RING AND COVER TO BE USED ON REUSE OR NON-POTABLE WATER SYSTEMS.

GENERAL NOTES -- COVER

- 1 VALVE BOX COVER DESIGNED TO FIT INTO VALVE BOX RING.
- 2 THE CASTING NUMBER, MANUFACTURER'S LOGO, DATE OF MANUFACTURE AND "USA" SHALL BE CAST IN A CONSPICUOUS LOCATION ON BOTH THE RING AND THE COVER.
- 3 FILLETS SHALL BE 1/4"R UNLESS OTHERWISE SPECIFIED.
- 4 A DRAFT ANGLE OF 3°-5° SHALL BE APPLIED UNLESS OTHERWISE SPECIFIED.
- 5 FINISH: REMOVE EXCESS IRON AND FINIS.



SECTION VALVE_BOX_COVER

SECTION VALVE_BOX_RING

REVISIONS	NM APWA
	WATER RING AND COVER FOR VALVE BOX
	DWG. 2328 FEB. 2006