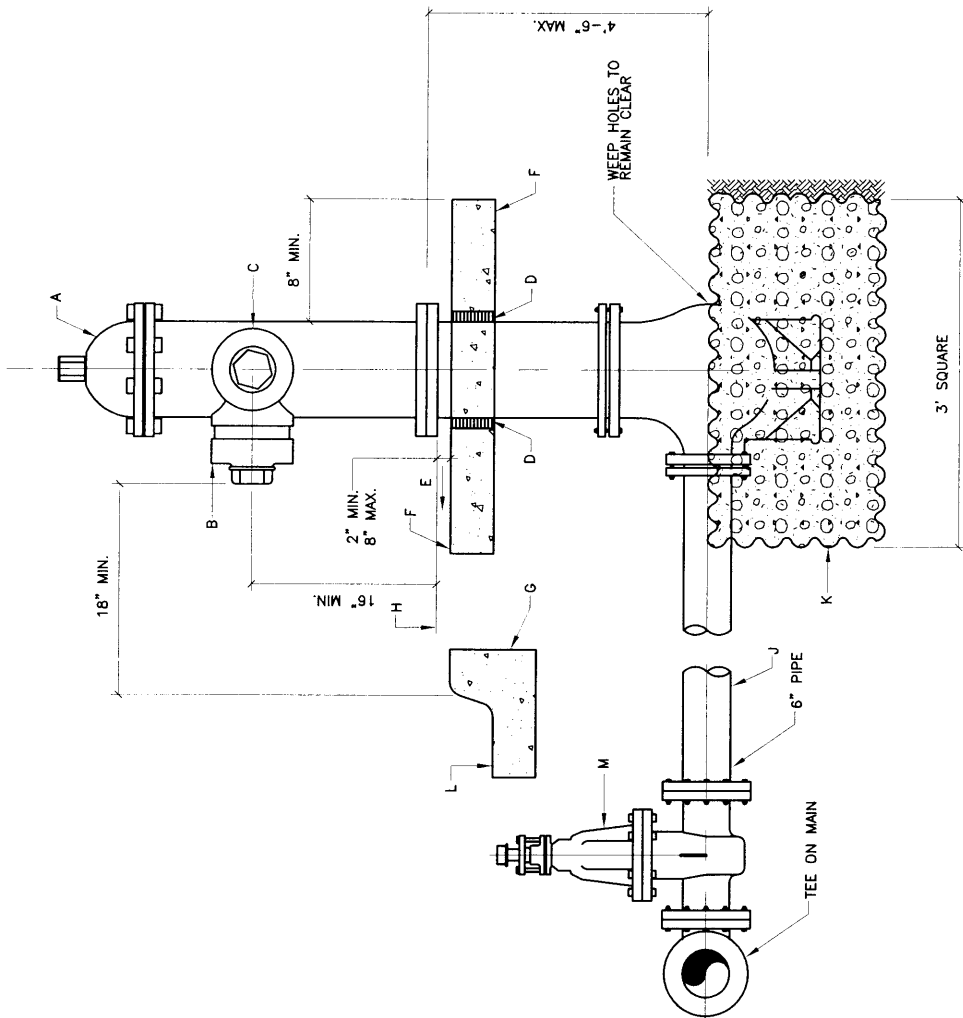


GENERAL NOTES:

- 1 NO OBSTRUCTIONS WILL BE PERMITTED WITHIN 3'-0" OF FIRE HYDRANT.
- 2 HYDRANT LEG SHALL BE VALVED FROM MAINS 10" DIAMETER AND LARGER AND IN ARTERIAL STREETS LOCATED IN COMMERCIAL AREAS.
- 3 CONTRACTOR SHALL BE RESPONSIBLE FOR SETTING TOP FLANGE OF FIRE HYDRANT TO THE CONTROLLED ELEVATION LINE.
- 4 FOR FIRE HYDRANT LOCATIONS, SEE DWG. 2347.
- 5 WHEN NEW OR EXISTING SIDEWALK ABUTS CURB, RECONSTRUCT SIDEWALK PER DWG. 2430, 2431.
- 6 PUMPER NOZZLE TO BE SET FACING THE TRAVELED WAY, UNLESS OTHERWISE NOTED ON PLANS.
- 7 HYDRANTS INSTALLED IN SIDEWALK AREAS SHALL MAINTAIN A MIN. 36-INCH CLEAR PEDESTRIAN PATH PER ADA STANDARD.

CONSTRUCTION NOTES:

- A FIRE HYDRANT PER SPECIFICATIONS.
- B PUMPER NOZZLE 4 1/2".
- C HOSE NOZZLE 2 1/2".
- D 1/2" EXPANSION JOINT MATERIAL.
- E MATCH SIDEWALK SLOPE OR SLOPE 1/4" PER FOOT.
- F 3"x3"x6" CONCRETE SQUARE PAD, TO BE CONSTRUCTED AROUND FIRE HYDRANT'S CENTER LINE WHEN NOT LOCATED WITHIN SIDEWALK OR CONCRETE AREA. CONCRETE PER SEC. 101 EXTERIOR CONCRETE. f'c=3500 psi @ 28 DAYS.
- G BACK OF CURB.
- H CONTROLLED ELEVATION LINE, LEVEL IN ALL DIRECTIONS.
- J USE OF RESTRAINED JOINTS IS MANDATORY. ALL FIRE HYDRANT LEG PIPING AND FITTINGS INCLUDING TEE ON MAIN SHALL BE RESTRAINED JOINT.
- K GRAVEL DRAIN POCKET, COVER TOP SURFACE WITH TAR PAPER, ASTM C33, NO. 57 GRAVEL.
- L STANDARD CURB AND GUTTER, FOR OTHER TYPES OF CURB AND GUTTER, OR WHERE NO CURB AND GUTTER EXIST, THE PLACEMENT OF FIRE HYDRANT REQUIRES SPECIAL DESIGN.
- M IF VALVE IS REQUIRED, VALVE WILL BE CONNECTED TO TEE AT MAIN PER STANDARDS.



| | |
|-----------|--------------|
| REVISIONS | NM APWA |
| | WATER |
| | FIRE HYDRANT |
| | INSTALLATION |
| | DWG. 2340 |
| | FEB. 2006 |