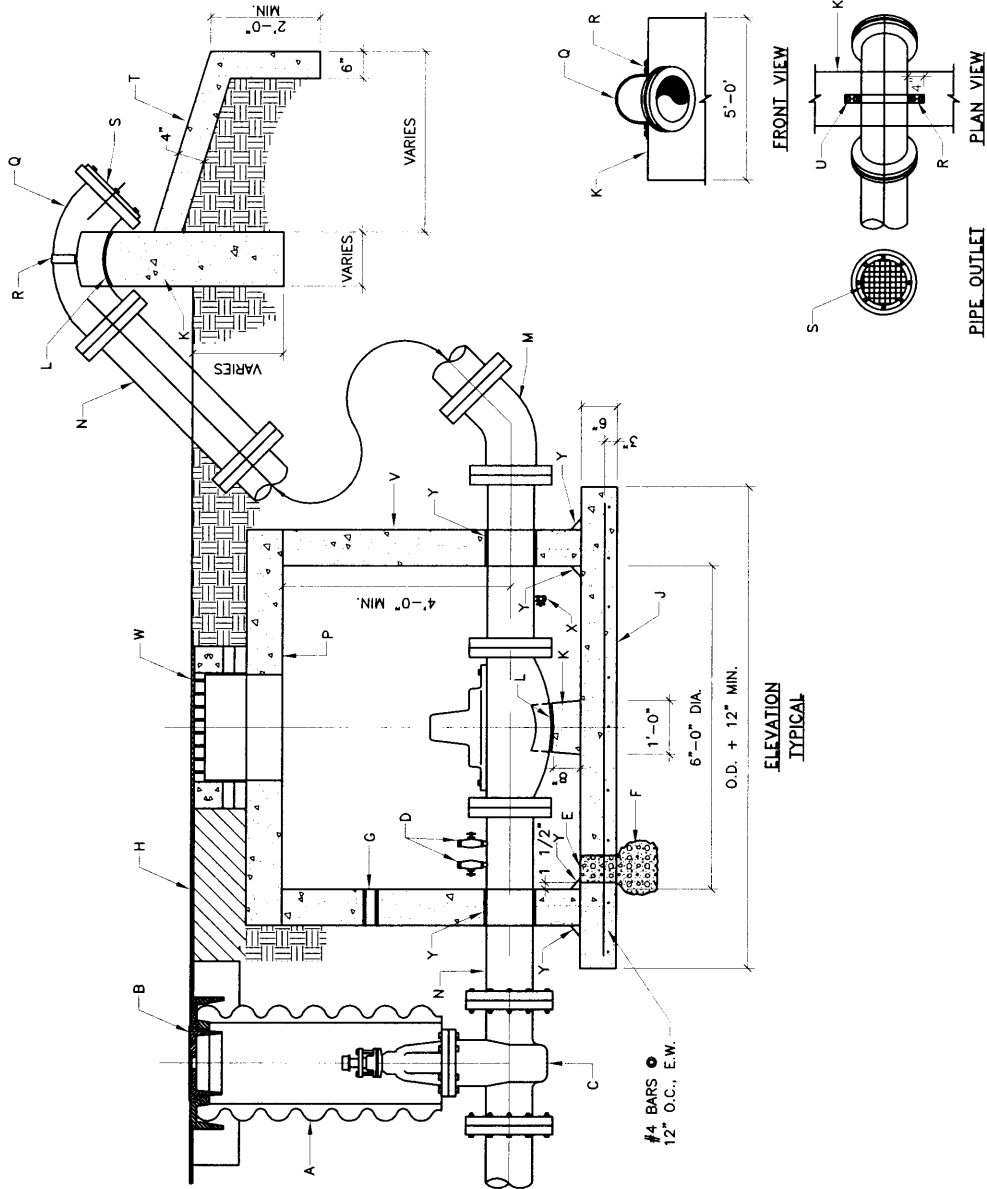


**GENERAL NOTES:**

- 1 SIZE, ELECTRIC AND MECHANICAL APPURTENANCES AND OUTLET DISCHARGE POINT AS REQUIRED BY THE WATER UTILITY DIVISION.
- CONSTRUCTION NOTES:**
- A VALVE BOX PER C.O.A. STD. DWG. 2326.
- B VALVE BOX RING AND COVER PER STD. DWG. 2328.
- C GATE VALVE (FL. - FL.).
- D 1/2" CONNECTIONS WITH PETCOCK FOR PRESSURE MEASURING DEVICES.
- E 6" DIAMETER FLOOR DRAIN HOLE THROUGH SLAB.
- F 1/2 CU. YD. COARSE GRAVEL, ASTM C33, NO. 57 GRAVEL.
- G 2" SLEEVE FOR CONDUIT.
- H PAVEMENT.
- J REINFORCED CONCRETE SLAB, SLOPE TO DRAIN. CONCRETE PER SEC. 101, HYDRAULIC STRUCTURAL CONCRETE.  $f'c=4000$  psi @ 28 DAYS.
- K REINFORCED CONCRETE PEDESTAL. CONCRETE PER SEC. 101, EXTERIOR CONCRETE.  $f'c=3500$  psi @ 28 DAYS.
- L 30 LB. FELT BETWEEN FITTING OR VALVE AND PEDESTAL.
- M C.I./D.I. 45° ELL. (FL. - FL.).
- N C.I./D.I. PIPE (FL. - FL.).
- P PRECAST CONCRETE COVER, SEE DWG. 2107, EXCEPT OPENING SHALL BE 34" DIAMETER MINIMUM.
- Q C.I./D.I. 90° ELL. (FL. - FL.).
- R ANCHOR STRAPS 3/8"x2".
- S COVER OPENING WITH 1/2" HARDWARE CLOTH, SECURE TO END OF ELL WITH 6- 3/8"x2" BOLTS, NUTS, AND WASHERS. CONCRETE SPLASH PAD TO BE DESIGNED FOR EACH SITE.  $f'c=3500$  psi @ 28 DAYS.
- U 4- 5/8"x10" ANCHOR BOLTS.
- V 6'-0" DIA. TYPE "C" MANHOLE, PER STD. DWG. 2101.
- W 36" MANHOLE FRAME AND COVER, THE COVER IS TO BE MARKED "WATER".
- X 1" TAP AND VALVE FOR DRAIN.
- Y NON-SHRINK GROUT.



ANCHOR DETAILS

PIPE OUTLET PLAN VIEW

FRONT VIEW

REVISIONS	NM APWA
	WATER
	SURGE RELIEF VALVE STATION
	DWG. 2353
	FEB. 2006