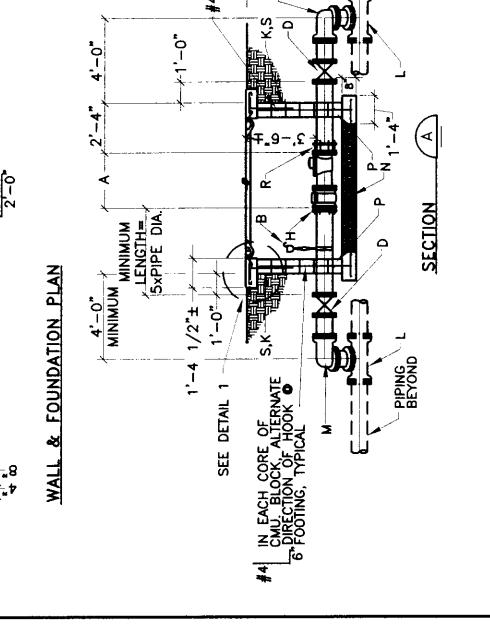
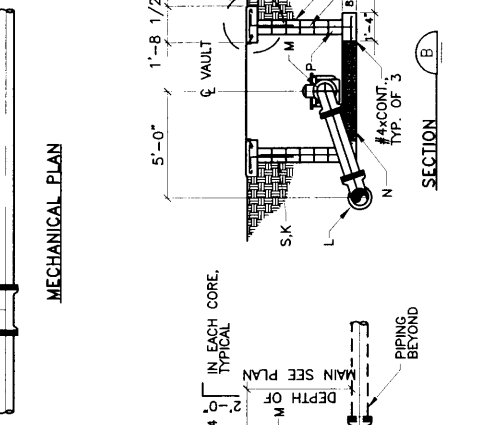
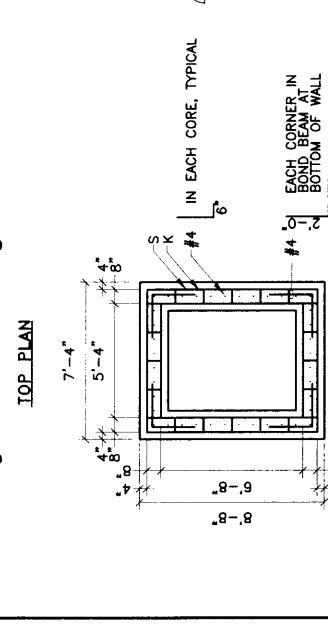
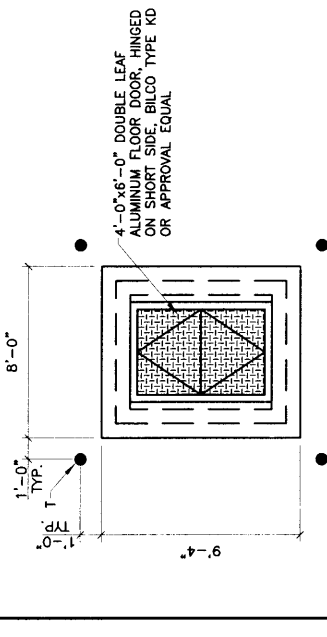
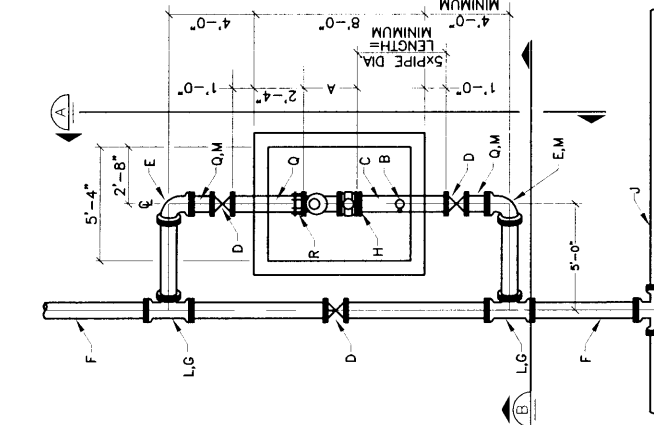
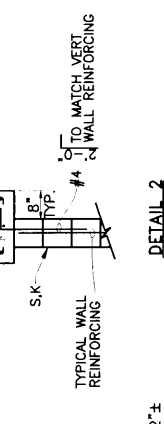
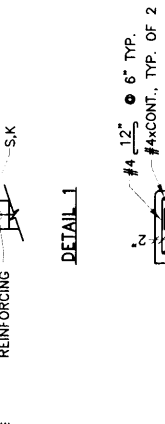
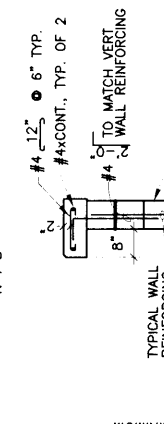
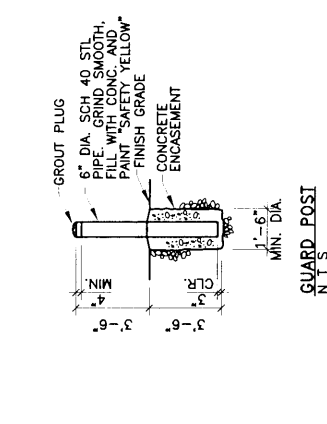


GENERAL NOTES:

- 1 COMPRESSIVE STRENGTH OF ALL CONCRETE SHALL BE 3500 PSI PER EXTERIOR CONC. SPEC SEC. 101.
- 2 COMPACT SURGRADE UNDER AND 12" EITHER SIDE OF FOOTING TO 95% MAXIMUM DENSITY, PER ASTM D-1557 TO 6" MIN. DEPTH.
- 3 PRECAST CONCRETE VAULT MAY BE USED IN LIEU OF CMU. CONSTRUCTION WITH WATER UTILITY DIVISION APPROVAL. SUBMIT DETAILS FOR REVIEW.

CONSTRUCTION NOTES:

- A LENGTH VARIES DEPENDING ON METER SIZE. COORDINATE WITH LAYING LENGTH REQUIRED. METER AND STRAINER TO BE PROVIDED AND INSTALLED BY OWNER.
- B 1" SADDLE TAP, 1" GATE VALVE AND 1" AIR RELEASE VALVE. AIR RELEASE VALVE SHALL BE AFCO MODEL NO. 200A OR APPROVED EQUAL.
- C D.I. SPOOL (FLANGE/PE) LENGTH AS REQ'D. MINIMUM LENGTH SHALL BE 5 TIMES THE PIPE DIAMETER.
- D GATE VALVE (FLANGED).
- E 90° ELBOW (MJ) WITH MEGALUGS.
- F MAIN SERVICE LINE.
- G MJ TEE WITH MEGALUGS.
- H MEGA FLANGE-FLANGE ADAPTER, SERIES 2100 AS MANUFACTURED BY EBAA IRON SALES, OR APPROVED EQUAL.
- J MAIN DISTRIBUTION LINE.



REVISIONS	NM APWA
	WATER LARGE DIAMETER METER VAULT
	DWG. 2370 FEB. 2006