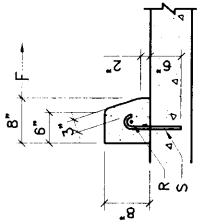


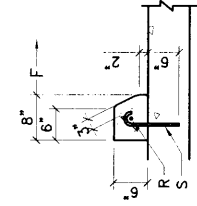
CONSTRUCTION NOTES

- A. REQ. CONC. CHANNEL LINING, OR CUT-OFF WALL, PROVIDE 1/4" EXP. JOINT BETWEEN BACK OF CURB & CHANNEL LINING AND/OR WALL.
- B. VARIABLE, DEPRESS AS NEEDED.
- C. DRIVE NO. 4 PINS 18" DEEP IN HOLES DRILLED @ 2" O.C. IN EXISTING PAVEMENT, SEAL WITH EPOXY.
- D. EXISTING ASPHALT CONCRETE (AC) OR PORTLAND CEMENT CONCRETE (PCC) PAVEMENT.
- E. THEORETICAL FACE OF CURB OR FLOWLINE.
- F. TRAFFIC SIDE.
- G. 3/4" RADIUS.
- H. 1-1/2" RADIUS.
- J. 2" RADIUS.
- K. 24" RADIUS.
- L. TACK COAT.
- M. DIMENSIONS AT ROUNDED CORNERS MEASURED TO INTERSECTION OF STRAIGHT LINES.
- N. 4" AC: MAJOR LOCAL OR BETTER (SP-II)
3" AC: LOCAL RESIDENTIAL STREET (TYPE C)
2" AC: BICYCLE PATH (TYPE B, RESIDENTIAL)
- P. 8" SCARIFIED AND COMPACTED SUBGRADE. 95% MINIMUM COMPACTION PER SECTION 301.
- Q. AC PAVEMENT.
- R. #4 CONT. BETWEEN JOINTS 3" COVER AT JOINTS.
- S. #3 PINS @ 3'-0" O.C. W/STD. HOOK.

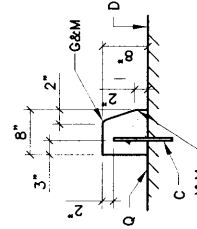
GENERAL NOTES
SEE COA DRAWING 2415A



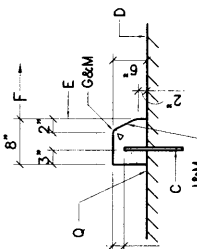
**PINNED CURB TYPE IV
OUTSIDE PAVEMENT**



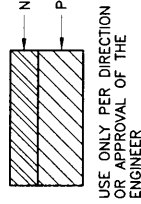
**PINNED CURB TYPE III
MEDIAN PAVEMENT**



**TYPE II
PINNED CURB**

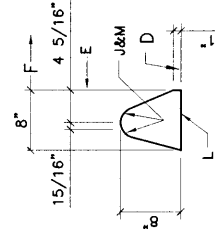


**TYPE I
PINNED CURB**

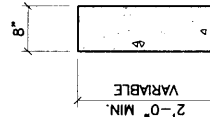


USE ONLY PER DIRECTION OR APPROVAL OF THE ENGINEER

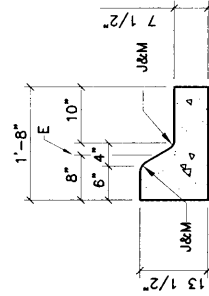
**TEMPORARY OR BICYCLE
PATH SECTION**



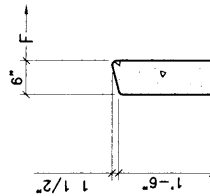
**TEMPORARY ASPHALT CURB,
TYPE C RESIDENTIAL**



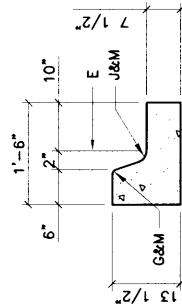
CUT-OFF WALL



**MOUNTABLE
MEDIAN CURB**



HEADER CURB



MEDIAN C & G

REVISIONS	NM APWA
9/91	PAVING
11/14/91	CURB AND GUTTER &
12/15/92	TEMPORARY PAVING SECTION
3/30/94	DWG. 2415B
	FEB. 2006