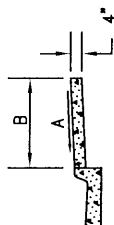


GENERAL NOTES:

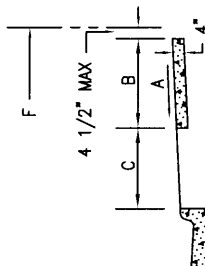
1. DEVIATIONS FROM THESE STANDARDS SHALL BE SUBMITTED TO THE CITY ENGINEER AND/OR CITY TRAFFIC ENGR. FOR APPROVAL PRIOR TO CONSTRUCTION.
2. SUBGRADE UNDER SIDEWALKS AND DRIVEPADS SHALL BE COMPACTED TO 90% MAX. DENSITY TO A DEPTH OF 6".

CONSTRUCTION NOTES:

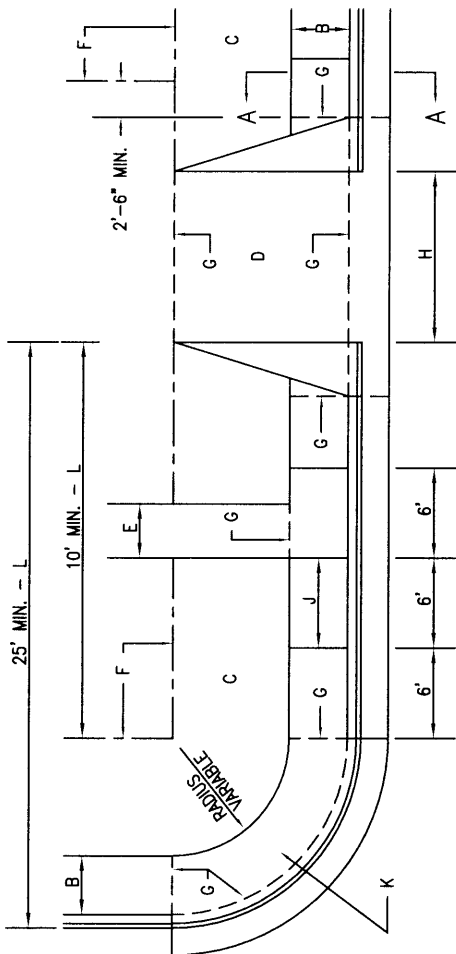
- A. SLOPE 1/4" PER FT.
- B. SIDEWALK WIDTHS SHALL BE IN ACCORDANCE WITH SIDEWALK ORDINANCE.
- C. SETBACK TO BE DETERMINED BY AVAILABLE R/W. SEE CHAPTER 23 OF THE DEVEL. PROC. MANUAL.
- D. SEE DRIVEPAD DETAIL, DWG. 2425.
- E. WALKWAY VARIABLE.
- F. PROPERTY LINE.
- G. 1/2" EXPANSION JOINTS WHERE SIDEWALK OR DRIVEPAD ABUTS BUILDINGS, FENCES, WALLS OR OTHER IMMOVABLE OBJECTS.
- H. 12 FT. MIN. 22 FT. MAX. RESIDENTIAL
12 FT. MIN. 25 FT. MAX. LIGHT COMMERCIAL
20 FT. MIN. 35 FT. MAX. HEAVY COMMERCIAL.
- J. CONTRACTION JOINTS.
- K. FOR WHEEL CHAIR RAMPS, SEE DWGS. 2440, 2441.
- L. CHECK DIMENSION FROM BOTH PROPERTY LINE AND FLOWLINE. USE WHICHEVER PLACES DRIVEPAD FARTHEST FROM INTERSECTION.



SECTION A-A

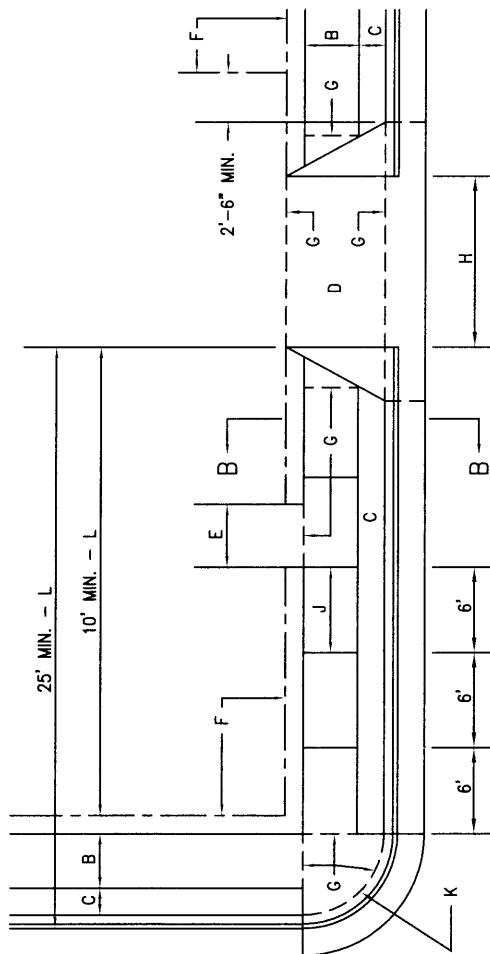


SECTION B-B



PLAN

CURB TYPE SIDEWALK



PLAN

OFFSET TYPE SIDEWALK

REVISIONS

NM APWA

PAVING
SIDEWALK DETAILS

DWG. 2430

AUG. 1986