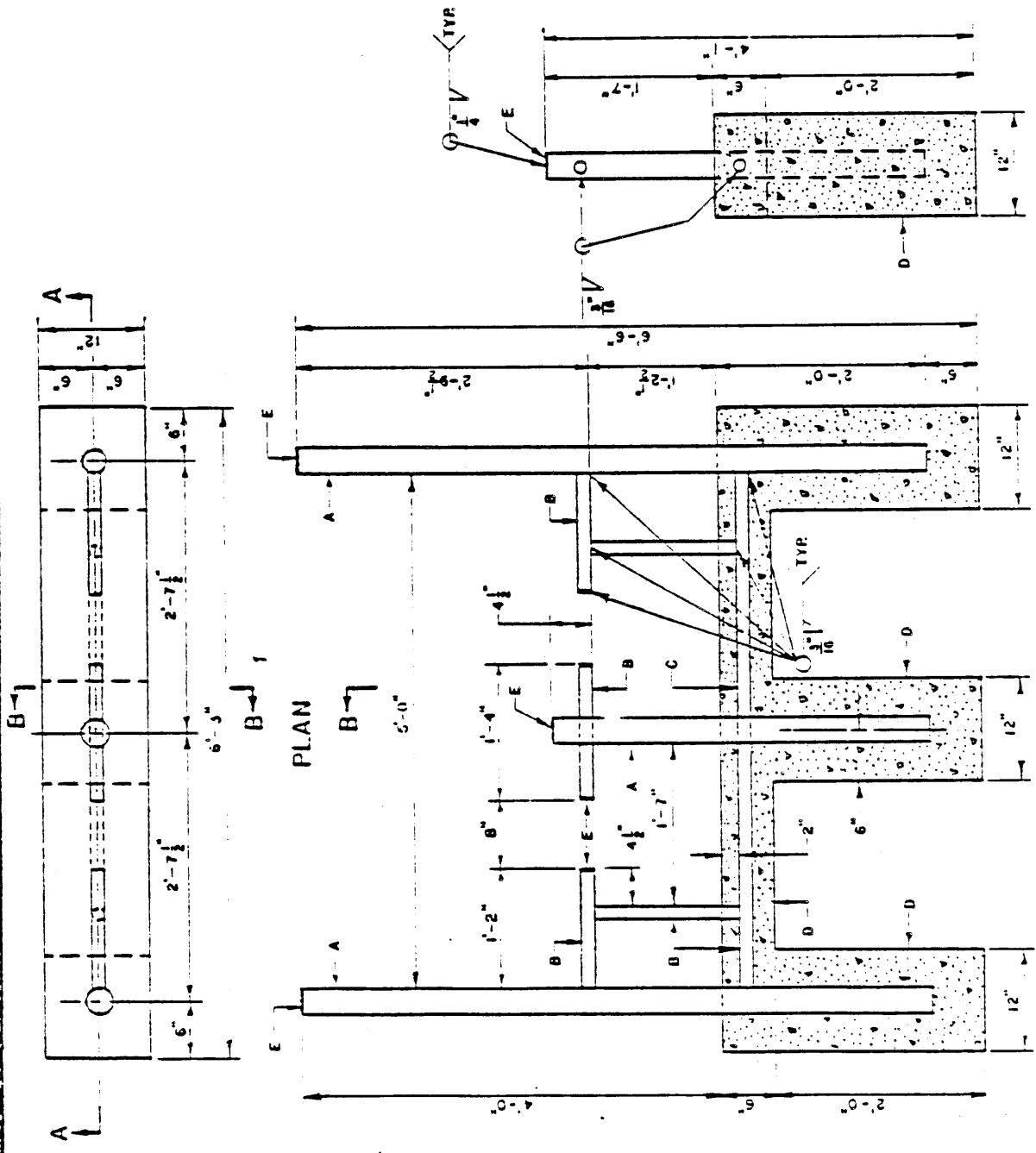


GENERAL NOTES:

1. SQUARE TUBING MAY BE USED IN LIEU OF SCH. 40 PIPE.
2. GALVANIZE BICYCLE GATEWAY AFTER FABRICATION.
3. GRIND ALL WELDS SMOOTH.

CONSTRUCTION NOTES:

- A. 3" DIA. SCH. 40 PIPE, TYPICAL.
- B. 1 1/2" DIA. SCH. 40 PIPE, TYPICAL.
- C. ENCLOSE BOTTOM MEMBER IN CONCRETE.
- D. PORTLAND CEMENT CONCRETE.
- E. 1/4" FLAT BAR, TYPICAL.



REVISIONS

NIM APWA

TRAFFIC

BICYCLE GATEWAY

DWG. 2540

AUG 1966

SECTION B-B

SECTION A-A