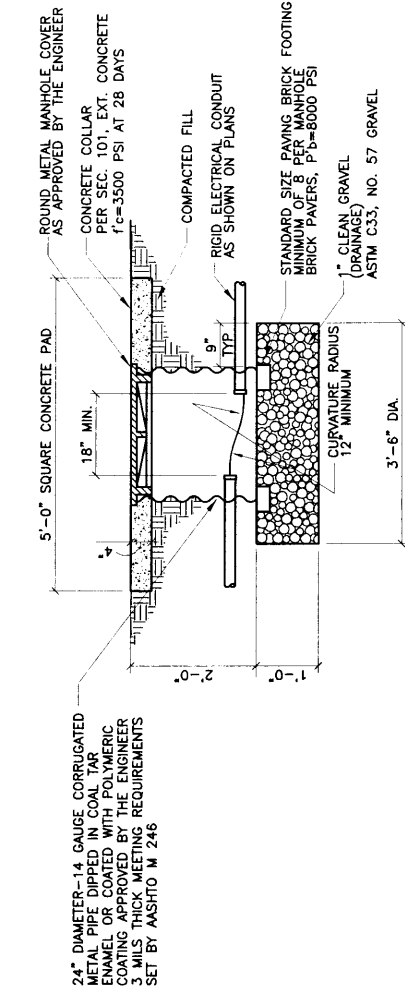


TRAFFIC SIGNAL MANHOLE (TYPICAL)  
RETROFIT INSTALLATION



TRAFFIC SIGNAL MANHOLE (TYPICAL)  
NEW CONDUIT INSTALLATION

- NOTES:
1. TRAFFIC SIGNAL MANHOLE TO BE CONSTRUCTED IN AREAS NOT NORMALLY ACCESSIBLE TO VEHICULAR TRAFFIC.

REVISIONS	NM APWA
	TRAFFIC SIGNAL MANHOLE DETAILS
	DWG. 2551
	FEB. 2006