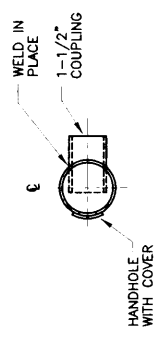
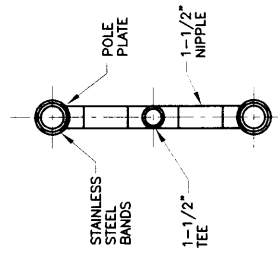
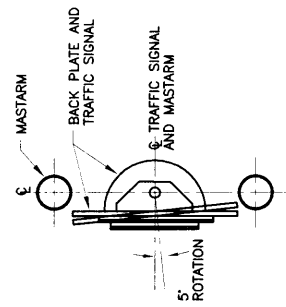
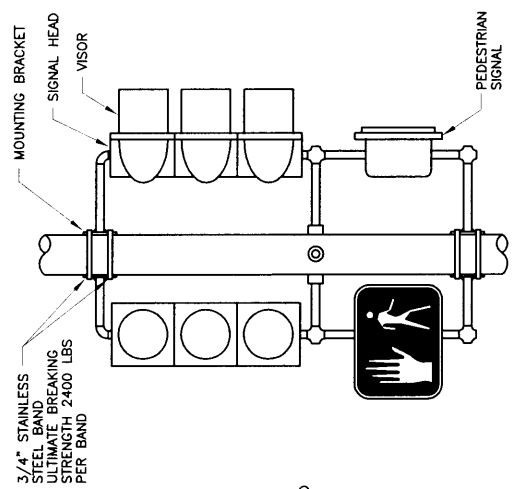
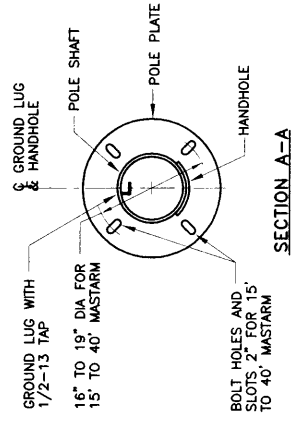
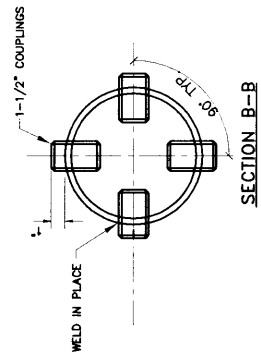
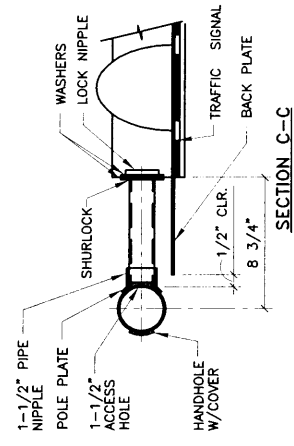


NOTE:
ONE SIZE ARM CLAMP FOR 15 TO 25 MASTARMS AND ONE SIZE FOR 30 TO 40 MASTARMS WILL BE ALLOWED



| | |
|-----------|-----------------------------------|
| REVISIONS | NM APWA |
| | TRAFFIC |
| | MASTARM DETAILS, TYPE II STANDARD |
| | DWG. 2562b |
| | FEB. 2006 |