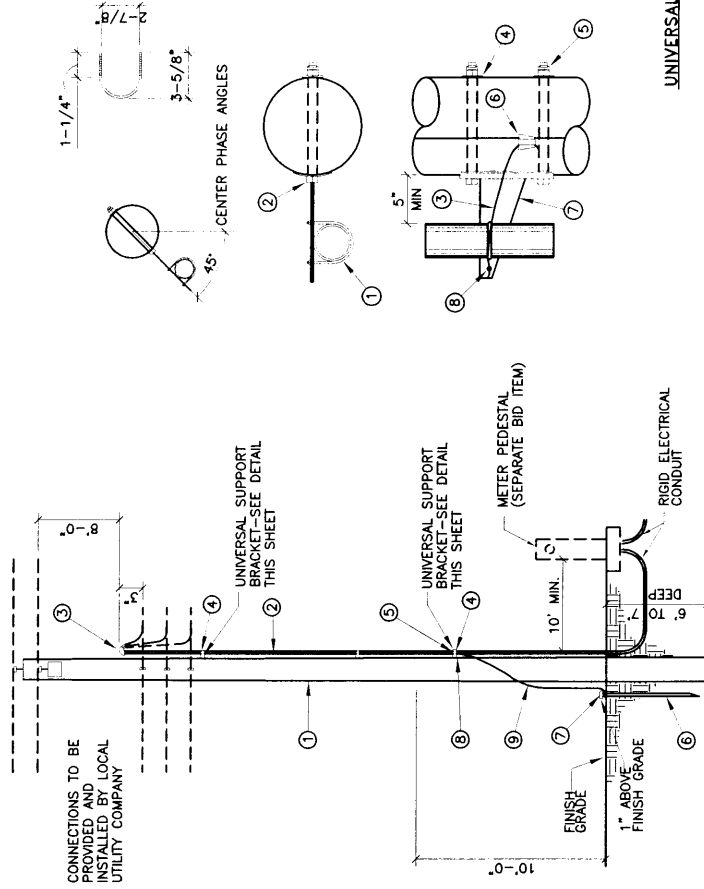


MATERIAL LIST

- ① 25' TREATED POLE
- ② 30' 2" GALVANIZED CONDUIT
- ③ 2" WEATHER HEAD
- ④ 2" UNIVERSAL SUPPORT BRACKET
- ⑤ 2" PIPE STRAP KIT
- ⑥ COPPER WELD 3/4"x10'-0" GROUND ROD
- ⑦ GROUND ROD CLAMP
- ⑧ GROUND LUG
- ⑨ #6 BARE COPPER GROUND WIRE
- ⑩ 5/8" EYE BOLT
- 40' 1/2 THW BLACK
- 40' 1/2 THW WHITE

SERVICE_POLE_(SIGNAL)

* CONDUIT AND WIRE EXTENDING MORE THAN 10' FROM POLE WILL BE MEASURED AND PAID PER ACTUAL FOOTAGE USED.



MATERIAL LIST

- ① EXISTING POLE
- ② 40' 2" GALVANIZED CONDUIT
- ③ 2" WEATHER HEAD
- ④ UNIVERSAL SUPPORT BRACKET
- ⑤ 2" PIPE STRAP KIT
- ⑥ COPPER WELD 3/4"x10'-0" GROUND ROD
- ⑦ GROUND ROD CLAMP
- ⑧ GROUND LUG
- ⑨ #6 BARE COPPER GROUND WIRE
- 50' 1/2 THW BLACK
- 50' 1/2 THW WHITE
- 50' 1/2 THW RED

SERVICE_RISER_(SIGNAL)

* CONDUIT AND WIRE EXTENDING MORE THAN 10' FROM POLE WILL BE MEASURED AND PAID PER ACTUAL FOOTAGE USED

MATERIAL LIST

- ① U BOLT
- ② 5/8" MACHINE BOLTS
- ③ #4 SOLID COPPER WIRE
- ④ 2-1/4" SQUARE WASHER
- ⑤ 5/8" MF LOCK NUT
- ⑥ LINE TAP
- ⑦ SUPPORT BRACKET
- ⑧ GROUNDING LUG

UNIVERSAL_SUPPORT_BRACKETS_NOTES:

1. BRACKET TO BE FASTENED TO POLE WITH 5/8" GALVANIZED MACHINE BOLTS.
2. BRACKET SUITABLE FOR TWO 2" CONDUITS.
3. TWO HOLE STRAPS ATTACHED AT 30" INTERVALS WITH 2" LAG SCREWS MAY BE USED INSTEAD OF THE SUPPORT BRACKET WHEN THE CONDUIT IS 1" OR LESS IN DIAMETER. TWO CONDUITS MAY BE STRAPPED DIRECTLY TO THE POLE.

UNIVERSAL_SUPPORT_BRACKETS

SIGNAL_SERVICE_NOTES

1. ALL SIGNAL SERVICE DETAILS, MATERIALS, & INSTALLATION SHALL CONFORM TO THE LOCAL POWER COMPANY REQUIREMENTS.
2. CONTACT LOCAL POWER COMPANY CUSTOMER SERVICES FOR POLE QUADRANT FOR RISERS.
3. ALL ABOVE GRADE CONDUIT SHALL BE GALVANIZED.
4. RISER BRACKET ASSEMBLY MUST BE GROUNDED PER LOCAL POWER COMPANY REQUIREMENTS.
5. CONDUIT AND WIRE EXTENDING MORE THAN 10' FROM POLE WILL BE MEASURED AND PAID PER ACTUAL FOOTAGE USED.
6. UNIVERSAL SUPPORT BRACKETS WILL BE CONSIDERED INCIDENTAL.
7. DRILLING HOLES IN EXISTING STEEL POLES FOR UNIVERSAL SUPPORT BRACKETS WILL NOT BE PERMITTED. BRACKETS SHALL BE MOUNTED ON STEEL POLES WITH STAINLESS STEEL BANDS.
8. PROVIDE ONE 50A, SINGLE POLE, 120V CIRCUIT FOR CONTROLLER SIGNALS.

REVISIONS

NM APWA

TRAFFIC SIGNAL
ELECTRICAL SERVICE DETAILS

DWG. 2570

FEB. 2006