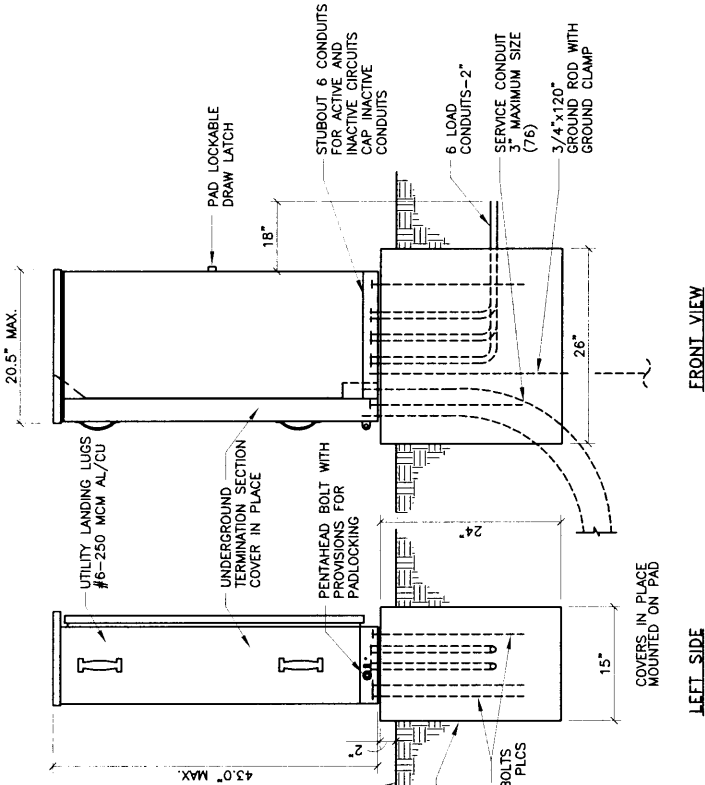
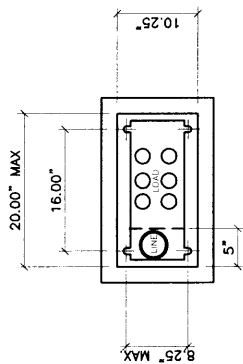


**CONTROL CABINET CONSTRUCTION NOTES**

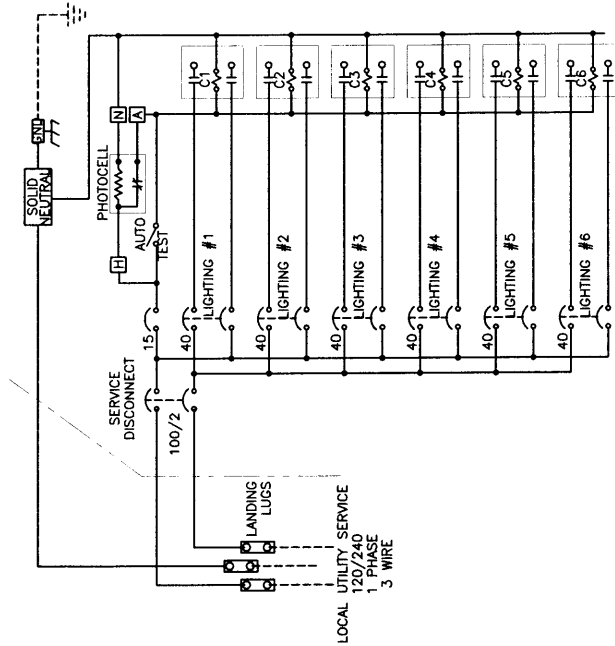
- CONTROL CABINET SHALL BE UL LISTED "INDUSTRIAL CONTROL PANEL" PER UL 508.
- CONTROL CABINET SHALL MEET THE ELECTRIC UTILITY SERVICE EQUIPMENT REQUIREMENTS COMMITTEE (EUSERC) GUIDELINES.
- CONSTRUCTION SHALL BE NEMA 3R AND 12, RAIN TIGHT AND DUST TIGHT. ELECTRICALLY WELDED AND REINFORCED WHERE REQUIRED.
- ALL NUTS, BOLTS, SCREWS AND HINGES SHALL BE STAINLESS STEEL.
- NUTS, BOLTS & SCREWS SHALL NOT BE VISIBLE FROM OUTSIDE OF CABINET.
- PHENOLIC NAMEPLATES SHALL BE PROVIDED AS REQUIRED.
- CIRCUIT BREAKERS SHALL BE CABLE IN-CABLE OUT WITH LINE ON TOP & LOAD ON THE BOTTOM. HANDLE POSITION UP="ON", MIDDLE="TRIPPED", DOWN="OFF".
- A PLASTIC COVERED WIRING DIAGRAM SHALL BE ATTACHED TO THE INSIDE OF THE FRONT DOOR. CABINET SHALL BE FACTORY WIRED AND CONFORM TO REQUIRED NEMA STANDARDS.
- ALL POWDER COATED CONTROL CABINETS SHALL HAVE A CORROSION RESISTANT COATING WHICH INCLUDES A FIVE STEP DIP TANK METAL PREPARATION PROCESS:
  - ALKALINE CLEANER 160° F.
  - CLEAR WATER RINSE.
  - IRON PHOSPHATE APPLICATION 150°.
  - CLEAR WATER RINSE.
  - INHIBITIVE RINSE TO SEAL PHOSPHATED SURFACES 120°.
 FINISHED WITH AN ELECTROSTATICALLY APPLIED DRY POLYESTER POWDER COATING THEN BAKED @ 360° TO CURE.
- CONCRETE FOUNDATIONS FOR CONTROL CABINET INCLUDING EXCAVATION AND BACKFILL, CONCRETE, GROUND RODS AND ANCHOR BOLTS, COMPLETE IN PLACE, WILL BE CONSIDERED INCIDENTAL TO THE CONTROL CABINET.



**LEFT SIDE**



**BASE PLAN**



- POWDER COAT COLORS**
- WHITE
  - MINT GREEN
  - RANCH GREEN
  - OTHER
  - CAMEL

- PHOTO ELECTRIC CELL**
- ON LIGHT POLE
  - IN SERVICE CABINET

- CONSTRUCTION MATERIALS AND FINISH**
- 12 GA HD GALVANIZED SHEET STEEL
  - POWDER COATED
  - 14 GA #304D STAINLESS STEEL SHEET
  - POWDER COATED COLOR:
  - NATURAL
  - 0.125" ALUMINUM SHEET
  - POWDER COATED COLOR:
  - ANODIZED

REVISIONS	NM APWA
TRAFFIC	
STREET LIGHTING	
CONTROL CABINET-	
SIX CIRCUIT UNMETERED	
DWG. 2574 FEB. 2006	