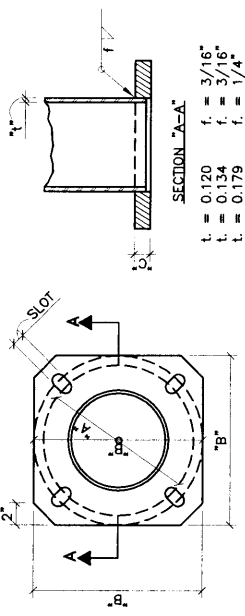


**GENERAL NOTES:**

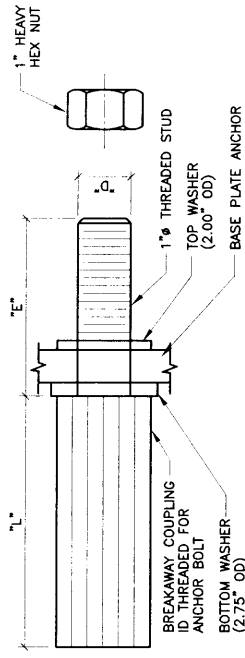
1. ALL FOUNDATIONS SHALL INCLUDE COPPER WELD GROUND RODS AS SHOWN WHICH SHALL BE CONSIDERED INCIDENTAL TO THE COMPLETION OF THE FOUNDATION. NO PRICE OR PAYMENTS SHALL BE MADE THEREFOR.
2. WELDING SHALL BE IN ACCORDANCE WITH SECTION 1.4.2 OF ASHTO STANDARD SPECIFICATIONS FOR STRUCTURAL SUPPORTS FOR HIGHWAY SIGNS, LUMINAIRES, AND TRAFFIC SIGNALS.
3. ALUMINUM STANDARDS MAY UTILIZE EITHER AN APPROVED ALUMINUM BASE OR BREAKAWAY COUPLINGS.



MOUNTING HEIGHT	NUMBER OF ARMS	DIMENSIONS (INCHES)		
		A (MIN)	B (MAX)	C
30-35"	1 OR 2	11	16	1" 1.13" x 2.69"
40"	1 OR 2	11	16	1" 1.13" x 3.69"
50"	1 OR 2	14	16	1" 1.13" x 2.19"

ANCHOR BASE SHALL BE FABRICATED FROM PLATE STEEL CONFORMING TO ASTM A-572. ANCHOR BOLTS SHALL BE WELDED TO POLE SHAFT PRIOR TO GALVANIZING SHAFT.

**ANCHOR BASE DETAIL**



D	THREAD	MINIMUM STRENGTH	RESTRAINED SHEAR		NUT TORQUE FT-LBS	L	E
			MIN	MAX			
1"	8 UNC	25 KIPS	30 KIPS	7.5 KIPS	175	4-3/4"	3-5/16"

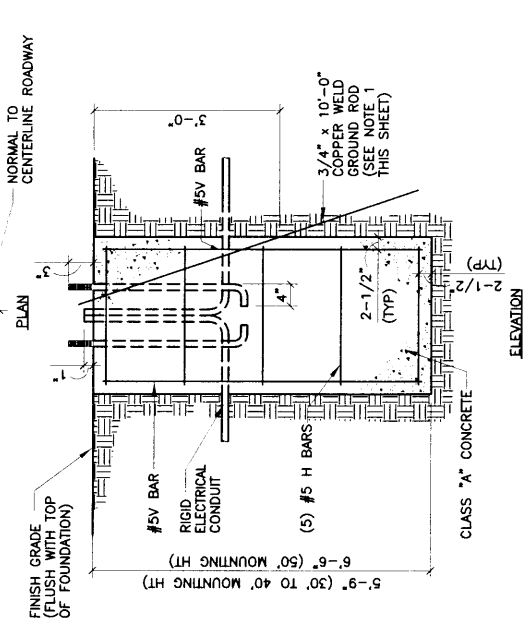
BREAKAWAY SUPPORT COUPLING SHALL CONFORM TO THE REQUIREMENTS OF ASHTO STANDARDS FOR BREAKAWAY SUPPORTS.

BREAKAWAY COUPLINGS SHOULD NOT BE USED ON 50' DOUBLE ARM POLES. COUPLING SHALL BE FABRICATED FROM EITHER DIE CAST ALUMINUM ALLOY 380 ACCORDING TO ASTM B-85, OR EXTRUDED FROM ALLOY 2024-T8511 ACCORDING TO ASTM A-153. WASHERS SHALL BE FABRICATED FROM ASTM A-36 STEEL PLATE AND SHALL BE GALVANIZED ACCORDING TO ASTM A-153.

HEX NUTS SHALL MEET THE REQUIREMENTS OF ASTM A-563 GRADE A, AND ANSI 18.22 HEX TYPE AND SHALL BE GALVANIZED ACCORDING TO ASTM A-153.

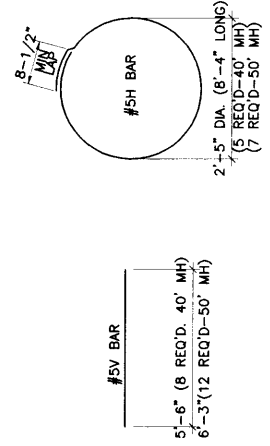
THREADED STUD SHALL MEET THE REQUIREMENT OF ASTM A-675 GRADE 90 AND IS GALVANIZED WITH ASTM A-153, OR IS FABRICATED FROM ANSI STAINLESS STEEL. WHEN COUPLINGS ARE FURNISHED, EACH LIGHT POLE SHALL BE FURNISHED WITH FOUR (4) COUPLINGS AND THREADED STUDS, EIGHT (8) FLAT WASHERS, AND FOUR (4) HEX NUTS.

BOLT CIRCLE TABLE		BOLT CIRCLE
MOUNTING HEIGHT	NUMBER OF ARMS	
30-35"	1 OR 2	11" OR 12"
40"	1	11" OR 12"
40"	2	14" OR 15"
50"	1	14" OR 15"
50"	2	14" OR 16"



**FOUNDATION DETAILS**

ESTIMATED FOUNDATION QUANTITIES			
ITEM	30' TO 40' MOUNTING HT	50' MOUNTING HT	
REINFORCING BARS, GRADE 60	92 LBS	139 LBS	
PORTLAND CEMENT CONCRETE CLASS "A"	1.33 CU YDS	1.5 CU YDS	



**REINFORCING BARS**

DIMENSION TABLE					
MOUNTING HEIGHT	NUMBER OF ARMS	D	L	I	UNC
30'-50'	1 OR 2	1"	3/6"	4"	B

ANCHOR BOLTS SHALL BE HOT BENT AND SHALL MEET THE REQUIREMENTS OF ASTM A-675 GRADE 90, NUTS MEET THE REQUIREMENTS OF ASTM A-563 GRADE A, AND ANSI B18.2.

FLAT WASHERS SHALL MEET THE REQUIREMENTS OF ANSI B27.2 HEAVY WASHERS.

LOCK WASHERS SHALL MEET THE REQUIREMENTS OF ANSI B18.21.1 HEAVY WASHERS.

BOLTS, NUTS AND WASHERS SHALL BE GALVANIZED IN ACCORDANCE WITH ASTM A-153.

FOUR (4) ANCHOR BOLTS, EIGHT(8) HEX NUTS, EIGHT (8) FLAT WASHERS, AND FOUR (4) LOCK WASHERS SHALL BE FURNISHED WITH EACH POLE.

NUTS, FLAT WASHERS, AND LOCK WASHERS FURNISHED FOR BREAKAWAY SUPPORTS SHALL BE SPECIFIED ON DETAILS.

**ANCHOR BOLTS**

REVISIONS	NM APWA
	TRAFFIC STREET LIGHTING FOUNDATION & MISCELLANEOUS DETAILS

**BREAKAWAY SUPPORT COUPLING**