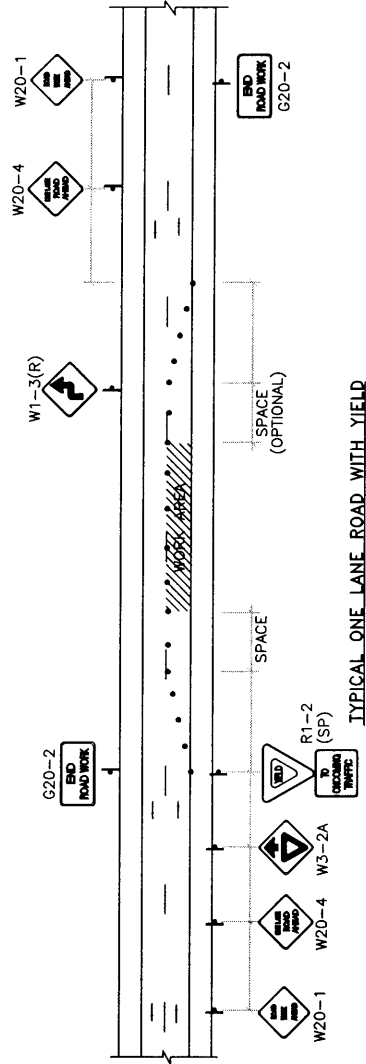


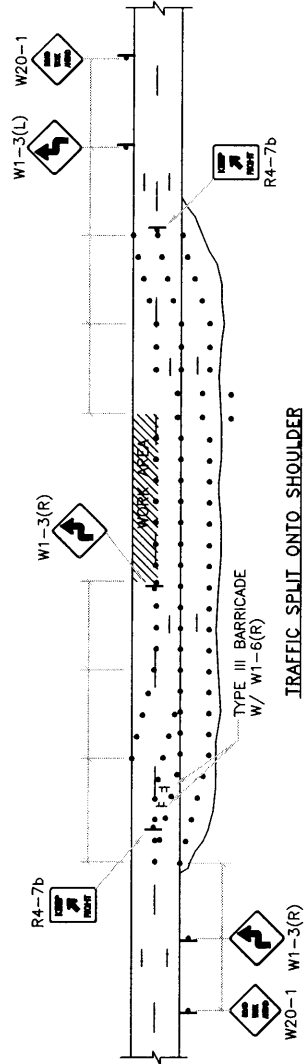
TYPICAL "REDUCED SPEED AHEAD" SET UP

SUGGESTED ADVANCE WARNING SIGN SPACING

ROAD TYPE	DISTANCE BETWEEN SIGNS		
	A	B	C
URBAN (LOW SPEED)	200	200	200
URBAN (HIGH SPEED)	350	350	350
RURAL	500	500	500
EXPRESSWAY/FREEWAY	1,000	1,600	2,800



TYPICAL ONE LANE ROAD WITH YIELD



TRAFFIC SPLIT ONTO SHOULDER

NOTES:

1. SHOULDER AREA MUST BE GRADED, LEVEL AND SURFACED PER SECTION 1200.5.6
2. LANE WIDTHS SHALL BE MAINTAINED AT 11 FEET MINIMUM.
3. SHOULDER MUST HAVE ADEQUATE "CLEAR ZONE".
4. TRAFFIC SPLITS ONTO SHOULDERS SHALL NOT EXCEED THREE DAYS.

GENERAL NOTE:

1. ALL CONSTRUCTION WARNING SIGNS SHALL HAVE A BLACK LEGEND ON A ORANGE BACKGROUND.
2. ALL ADVANCE WARNING SIGNS SHALL BE A MINIMUM OF 36" BY 36" IN SIZE AND SHALL HAVE ONE WARNING LIGHT.
3. SEE DWG 2803 FOR DEFINITION OF "D" AND "L".

REVISIONS	NM APWA
	TEMPORARY TRAFFIC CONTROL TYPICAL TRAFFIC CONTROL & SIGNING EXAMPLES (REF. MUTCD) DWG. 2808 FEB. 2006